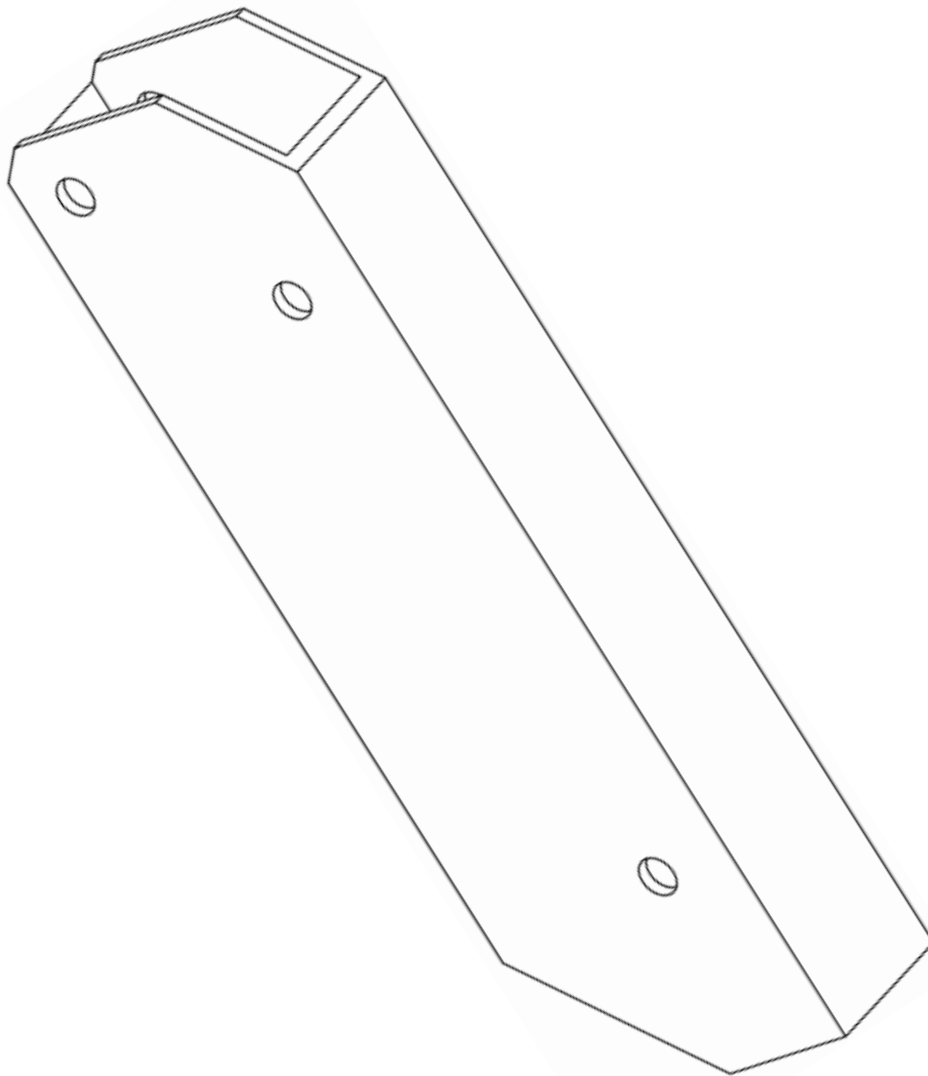


# INSTALLATION MANUAL

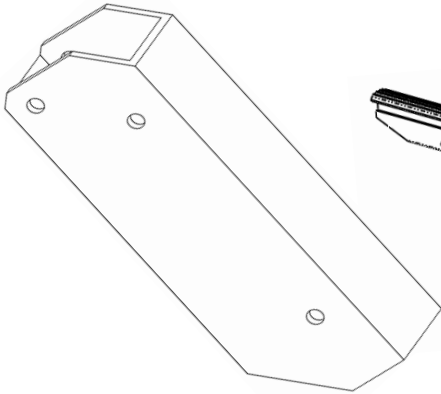
ACCESSORY: OFFSET BRACKET FOR  
TORANADO LIFT



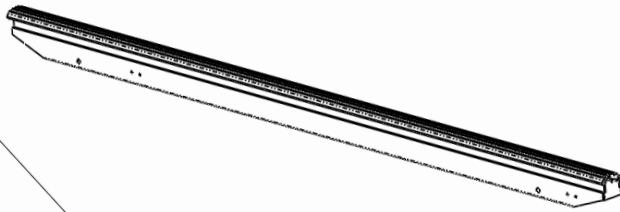
2026 Edition



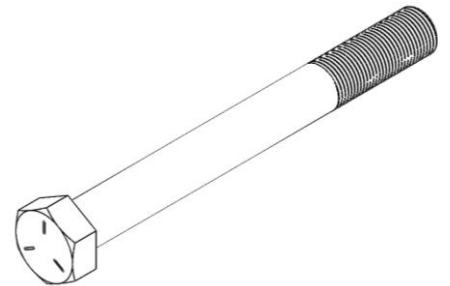
# PROVIDED FOR ASSEMBLY



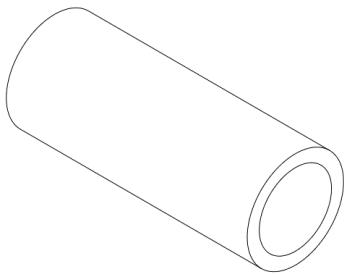
(4) Offset Bracket



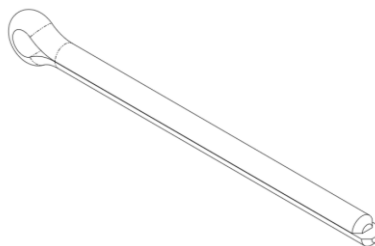
(2) Aluminum Multi-Bunks



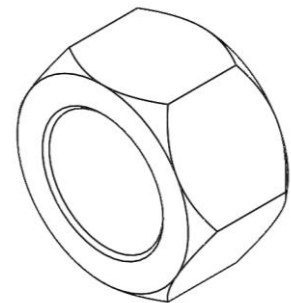
(16) 3/4" x 7 1/2" Threaded Bolts  
(16) Lock Washers



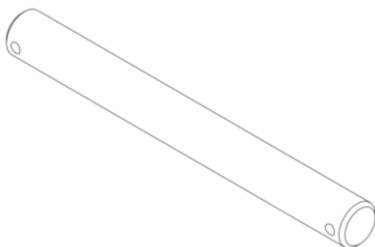
(16) Pipe Spacer



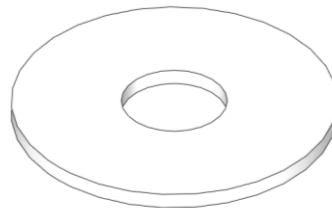
(8) 1/8" Cotter Pins



(16) 3/4" Hex Nut



(4) Hinge Pins:  
3/4" x 5-3/8" L

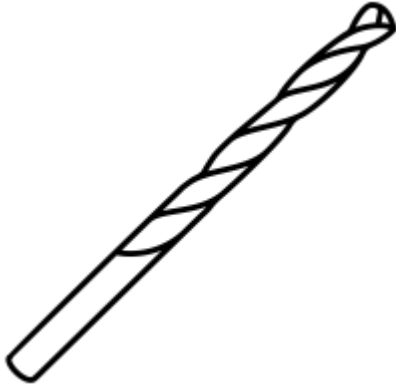


(8) 3/16" X 1-3/4"  
Nylon Washers



(24) 3/4" SS Flat Washer

# REQUIRED INSTALLATION TOOLS



13/16" Drillbit w/ Drill



1-1/8" Open End Box Wrench



1/2" Drive Ratchet  
1-1/8" Socket

## General Assembly Instructions

1. **READ** all instructions before starting installation.
2. **CHECK** to see if the installation crew is properly licensed, insured, and qualified. If this a first time installation, a company representative will assist for the installation and initial lifting.
3. **CLEAR** a moderate area of space to lay out all of the components necessary in constructing the Tornado Lift.



# Step 1:

**ALIGN** the corresponding hole of the offset bracket with the hole of the H-frame as depicted (fig.1). Align the side of the offset bracket with the rectangular tube of the H-frame so that they're parallel with each other. Next, drill a hole through the corresponding hole of the offset bracket and through both walls of the H-frame with the 13/16 drillbit (fig.2). Hold the offset bracket up against the H-frame for the next step. Repeat this step three more times, once for each of the offset brackets with the other H-frames.

Fig.1

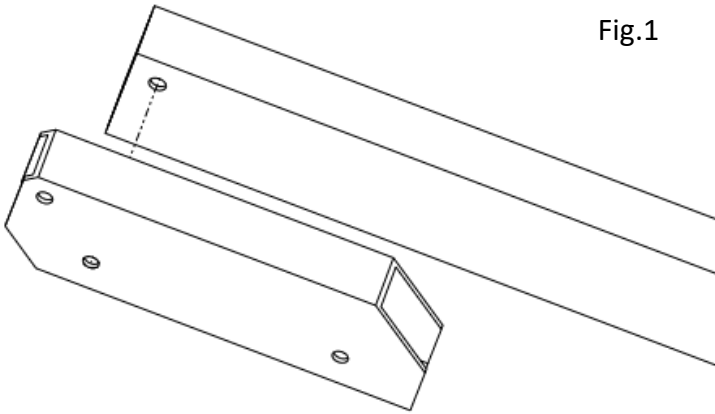
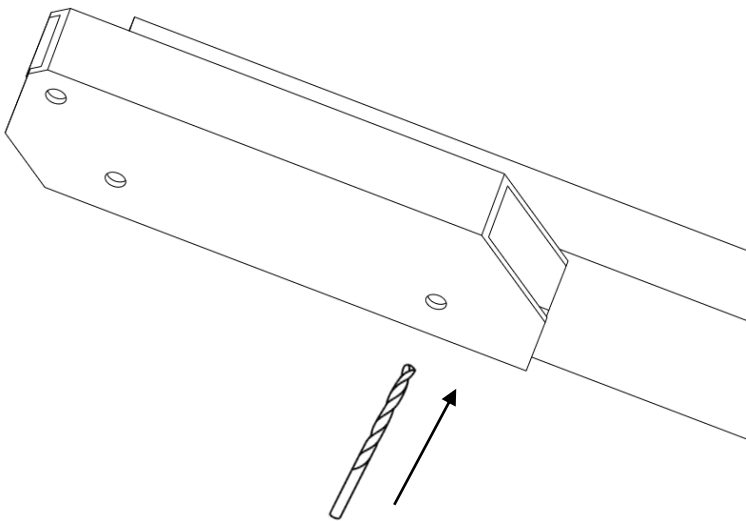
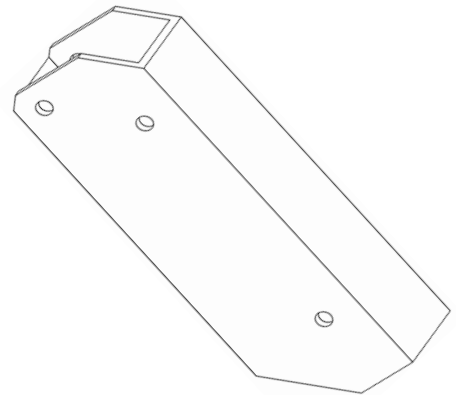


Fig.2



## PARTS REQUIRED FOR THIS STEP



(4) Offset Bracket

# Step 2:

**INSERT** two pipe spacers, one inbetween the offset bracket and one into the H-frame. Next, align the holes of the spacers with that of the offset bracket as shown in the diagram (fig.1). Once inserted, push a threaded bolt through the offset bracket, both pipe spacers, and the H-frame as shown. Then, slip one 3/4" flat washer over the threaded ends of the bolt. Fasten with one 3/4" nut on either side. Using the 1-1/8" wrench and socket, tighten the nut to lock the bolt onto the offset bracket and H-frame. Repeat this step seven more times, once for the other end of the offset bracket and six times for the other offset brackets.

Fig.1

## PARTS REQUIRED FOR THIS STEP

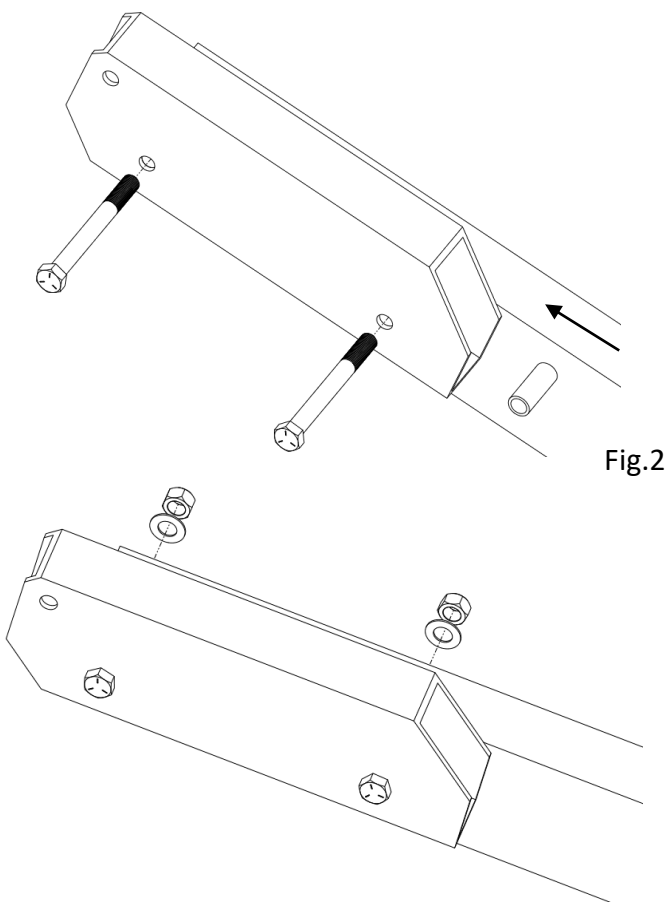
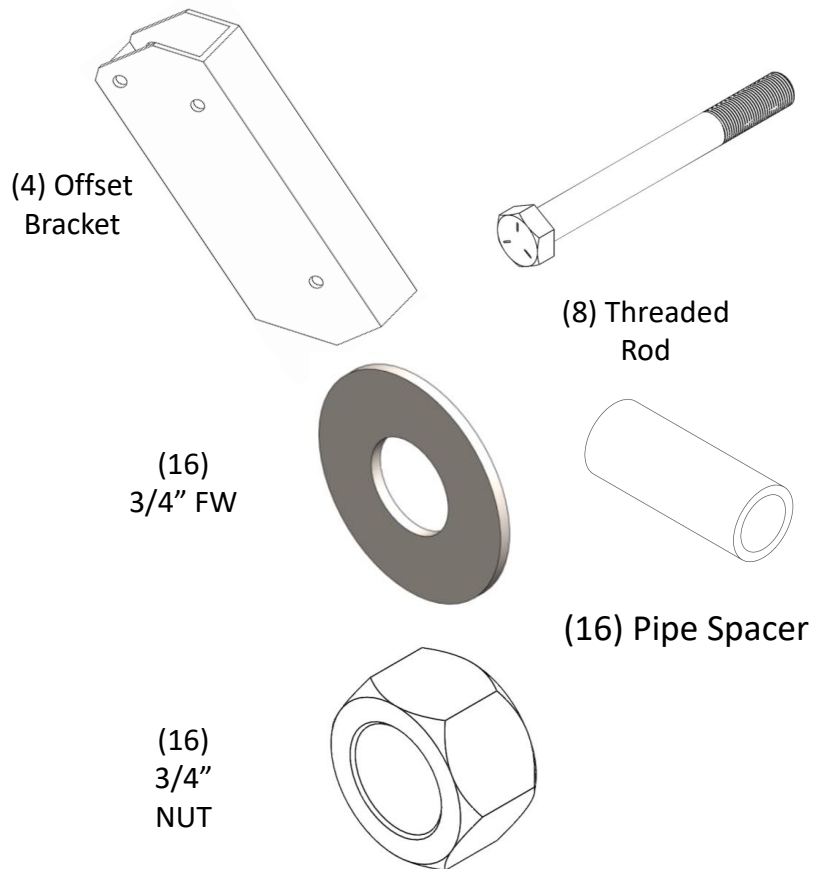


Fig.2



# Step 3:

**ALIGN** the 1" hole in the **Aluminum Multi-Bunk** with the corresponding hole in the top of the offset bracket. Next, insert a 1/8" cotter pin into the hole located at either end of 3/4" x 5-3/8" L hinge pin. Using the pliers, bend the tines of the cotter pin outward away from one another securing it to the hinge pin. Slip a 3/4" SS flat washer over hinge pin and insert into the offset bracket (fig.1). Before continuing through the H-frame, slide a 3/4" nylon washer between the H-frame and the offset bracket, align holes and continue through with the hinge pin. Insert another 3/4" nylon washer as before and fasten with a 3/4" SS flat washer and 1/8" cotter pin remembering to bend the tines to secure. Repeat this step three more times, once for the other bunk and twice for the opposite end of each bunk.

## PARTS REQUIRED FOR THIS STEP

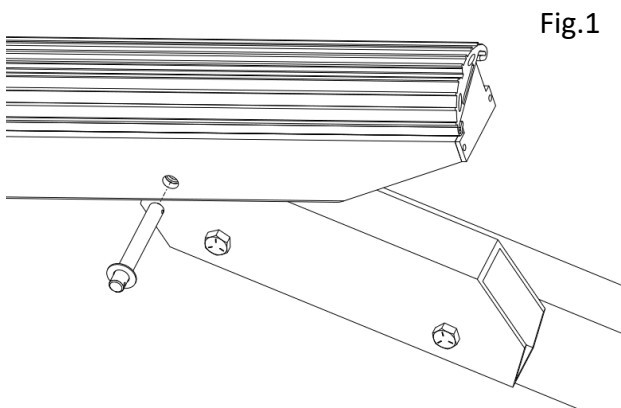
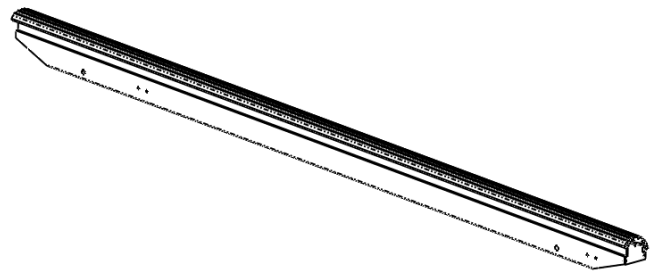
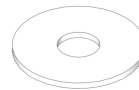


Fig.1

(2)



(8)  
3/4"  
NYLON  
WASHER



(4)  
3/4" x 5-  
3/8" L HINGE  
PIN

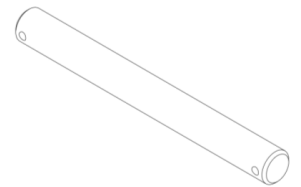
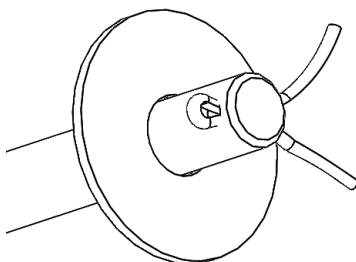


Fig.2



(8)  
3/4" SS FW



(8)  
COTTER  
PIN

