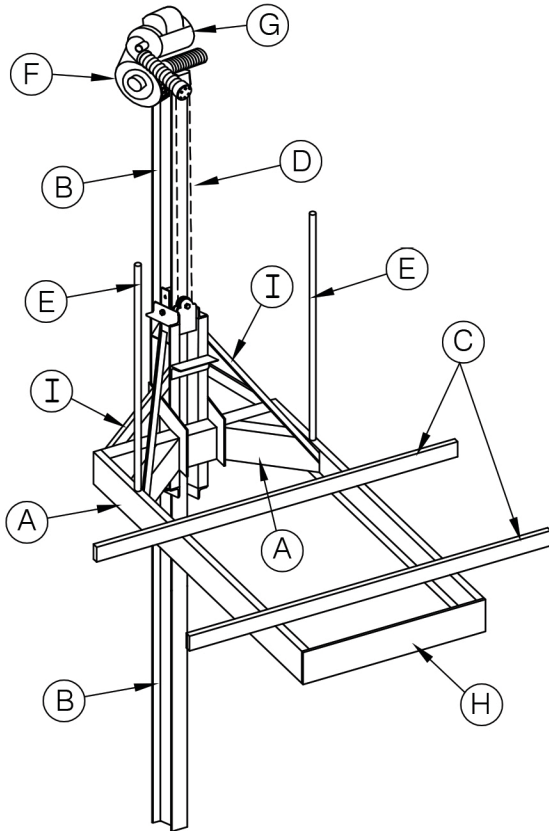


GOLDEN ENGINEERED 3K SINGLE TRACK ELEVATOR LIFT



STRUCTURAL ENGINEERING REVIEW

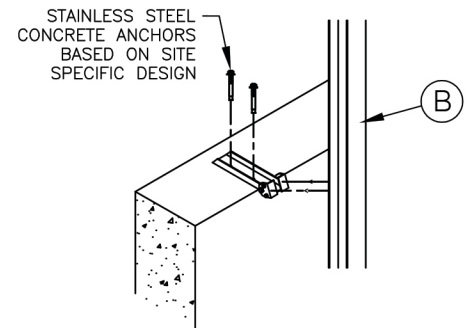
THIS CONSTRUCTION HAS BEEN DESIGNED AS A MAIN WIND FORCE RESISTING SYSTEM, WITH CALCULATED GRAVITY AND WIND LOADS IN COMPLIANCE WITH THE FLORIDA BUILDING CODE, 8th EDITION, 2023, ADM 2020 AND ASCE/SEI 7-22 "MINIMUM DESIGN LOADS AND ASSOCIATED CRITERIA FOR BUILDINGS AND OTHER STRUCTURES" TO WITHSTAND THE WIND LOADS ASSOCIATED WITH AN ULTIMATE WIND SPEED OF 180 MPH, EXPOSURE "D", RISK CATEGORY I. J.L. SANDERS, PE HAS NO CONTROL OF THE MANUFACTURING, PERFORMANCE, OR INSTALLATION OF THIS PRODUCT. THESE GENERIC DESIGN FEATURES WERE ENGINEERED IN ACCORDANCE WITH ACCEPTED ENGINEERING PRACTICES BASED ON DATA PROVIDED BY THE MANUFACTURER. THIS STRUCTURAL REVIEW IS LIMITED TO THE PRIMARY FRAMING AND CONNECTIONS AND IS NOT INTENDED TO COVER MECHANICAL AND ELECTRICAL COMPONENTS. THESE DESIGN FEATURES ARE BASED ON STRUCTURAL CALCULATIONS, TITLED "STRUCTURAL CALCULATIONS FOR ELEVATOR", WHICH CONTAIN ADDITIONAL DESIGN REQUIREMENTS AND CRITERIA AND ARE AVAILABLE UPON REQUEST. THE BOAT LIFTS DEPICTED BY THESE DESIGNS AND RELATED CALCULATIONS WERE ENGINEERED AS MANUFACTURED PRODUCT FOR NON-SITE SPECIFIC USE AND SHALL MEET THE DESIGN REQUIREMENTS AND INSTALLATION LIMITATIONS LISTED IN THE STRUCTURAL CALCULATIONS - IN PARTICULAR THE TRACK BEAM SHALL BE ADEQUATELY BRACED AT NO MORE THAN 9 FT. O.C.

THIS ITEM HAS BEEN DIGITALLY SIGNED AND SEALED BY J.L. SANDERS, PE ON THE DATE ADJACENT TO THE SEAL. PRINT COPIES OF THIS DOCUMENT ARE NOT CONSIDERED SIGNED AND SEALED. THE SIGNATURE MUST BE VERIFIED ON ELECTRONIC COPIES.

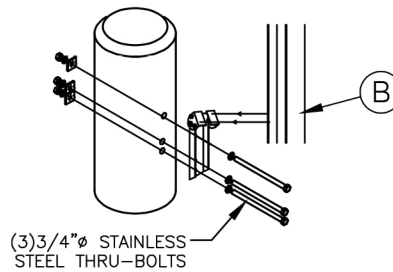
J.L. SANDERS, PE
2515 GRATIS ROAD NW
MONROE, GA 30656
PHONE 239-671-1578

Digitally signed by J.L. Sanders
Date: 2024.01.24 14:09:46 -05'00'

J. L. SANDERS, P.E. Date:
Reg. Florida No. 66361



TYPICAL HORIZONTAL
CONNECTION TO
CONCRETE SEAWALL



TYPICAL VERTICAL CONNECTION
TO WOOD PILE OR HORIZONTAL
WOOD DECK FRAMING

NOTE: THIS STRUCTURE HAS BEEN DESIGNED FOR LOADS ASSOCIATED WITH AN ULTIMATE WIND SPEED OF 180 MPH, EXPOSURE "D", RISK CATEGORY I, CALCULATED PER FLORIDA BUILDING CODE 8th EDITION 2023, ASCE/SEI 7-22 AND ADM-2020. BOATS SHALL NOT BE STORED ON LIFTS DURING HIGH WIND EVENTS. SITE SPECIFIC INFORMATION IS REQUIRED TO DETERMINE IF ADDITIONAL BRACING IS REQUIRED. ALL MEMBERS 6061-T6 ALUMINUM.

SUMMARY OF DESIGN FEATURES

	(A)	(B)	(C)	(D)	(E)	(F)	(G)	(H)	(I)	
LIFT CAPACITY	CRADLE BEAM	TRACK BEAM	BUNK FEET	CABLE SIZE	GUIDE POST HEIGHT	DRIVE UNIT	MOTOR HP/VOLTAGE	END PLATE	DIAGONAL BRACES	INCHES OF LIFT PER MIN.
3,000#	(2) C7x2.75 TW = .17 TF = .29 78"	8" W x 6"D DOUBLE WEB Tf = .35, .27 Tw = .17 20'	(2) 2x8x84	5/16" Ø (7X19) x 20' S.S. 2 PART	48"	SEA-DRIVE® 8000	3/4 HP 120V/20A	7H .25T 48"	∠3"x3"x3/8"	21" to 108"