

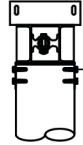
GOLDEN ENGINEERED 4 POST, 4 MOTOR SEA DRIVE BOAT LIFTS



Double the Speed, Double the Strength.

WOOD PILE ATTACHMENT

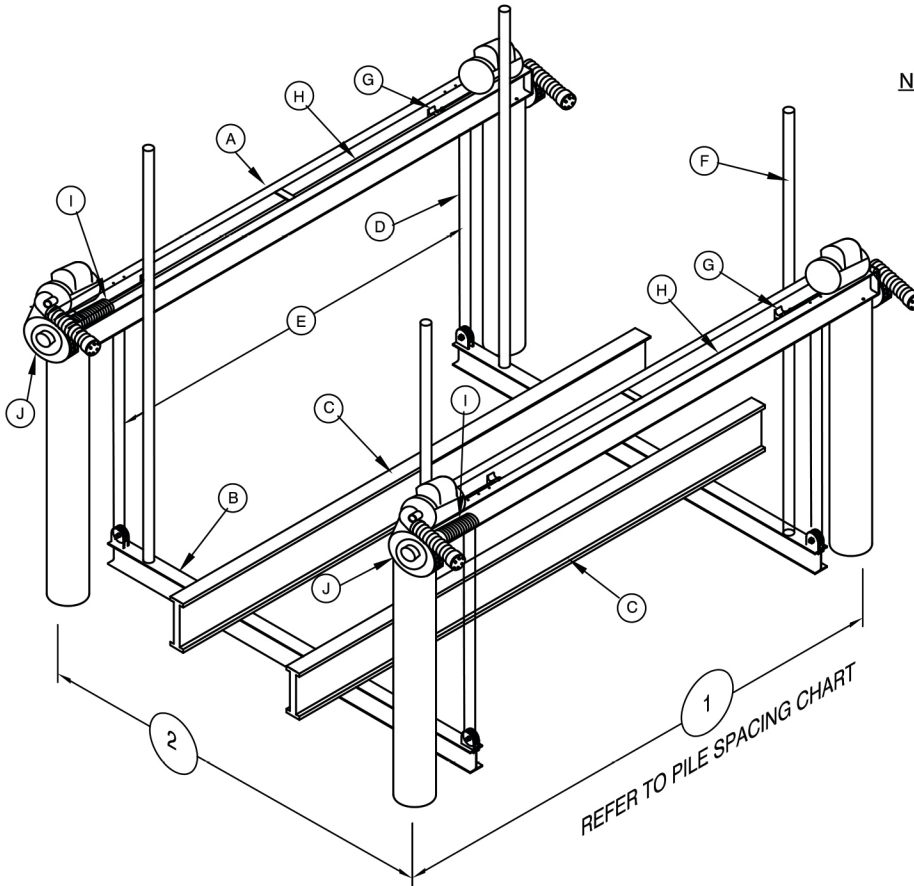
STAINLESS STEEL PILING MOUNT BRACKET- RECOMMENDED ATTACHMENT BASED ON BRACKET CONFIGURATION. VERIFY ADEQUACY BASED ON ACTUAL SITE CONDITIONS:
 4-3/8" STAINLESS STEEL LAG SCREWS USED TO CONNECT THE BRACKETS TO THE PILING AND
 2-3/8" STAINLESS STEEL CARRIAGE BOLTS USED TO CONNECT THE BRACKETS TO THE LIFT CHANNELS



NOTE: CONCRETE PILE (NOT SHOWN)

(2) 3/16" STAINLESS STEEL SIMPSON TITEN FASTENERS WITH MIN. 4" EMBED. INSTALL ONE INSIDE AND ONE OUTSIDE 8" BELOW TOP OF PILE.

5/8" DIAMETER FOR 30-40K LIFTS
 3/4" DIAMETER FOR 56K LIFT



PILE SPACING CHART
 The boat center of gravity needs to be set in the center of the top beam

Lift Capacity Lb.	"1" Dimension		Recommended	
	Ft.	Ft.	Wood Pile Inch Dia.	Conc. Pile Inch Dims.
30,000	16	16	12	12 x 12
32,000	16	16	12	12 x 12
40,000	16	18	12	12 x 12
56,000	18	20	12	12 x 12

NOTE: THIS STRUCTURE HAS BEEN DESIGNED FOR LOADS ASSOCIATED WITH AN ULTIMATE WIND SPEED OF 180 MPH, EXPOSURE "D", RISK CATEGORY I, CALCULATED PER FLORIDA BUILDING CODE 8th EDITION 2023, ASCE/SEI 7-22 AND ADM-2020. BOATS SHALL NOT BE STORED ON LIFTS DURING HIGH WIND EVENTS.

IN GENERAL, PILING PENETRATION TO BE A MINIMUM OF 10' INTO THE SAND BOTTOM OR 5' INTO THE ROCK STRATA. SUB-SURFACE CONDITIONS CAN VARY GREATLY, THE CONTRACTOR SHALL VERIFY ALL PILE CAPACITIES. ALL PILING TO BE 2.5 C.C.A. PRESSURE TREATED WOOD. ALL STRUCTURAL MEMBERS TO BE 6061-T6 ALUMINUM.

SUMMARY OF DESIGN FEATURES

LIFT CAPACITY Lbs	(A) TOP BEAM CHANNEL 2 EACH INCHES	(B) CRADLE I-BEAM 2 EACH INCHES	BUNK 10 x 6 x 25" ALUM	(D) CABLE SIZE INCHES	(E) CABLE SPREAD IN	(F) GUIDE POST HEIGHT IN	BEARINGS 10 - 2" H.D. EXTRUDED 6061-T6 ALUM.	DRIVE SHAFT 1-15/16" DIA. SCH 80 GALV PIPE	WINDER DIA 3-1/2" DIA SCH 80 ALUM PIPE W/ CABLE GROOVES	MOTOR HP VOLTAGE 4 - 1-1/2 HP 120V/20A 240V/10A	INCHES OF LIFT PER MIN 14" to 54"	
	(C) CRADLE I-BEAM 2 EACH INCHES	(G) CABLE SIZE INCHES		(H) CABLE SPREAD IN								
30,000#	C10 x 8.64 LB/FT 10 H x .526 2.88 W x .437 x 206 OAL	12H x .31 7 W x .62 x 192 Long		4- 1/2" x30' ST ST 2 PART	134"	120"					21" to 54"	
32,000#	C10 x 8.64 LB/FT 10 H x .526 2.88 W x .437 x 206 OAL	14 H x .30 8 W x .60 192" Long		3- 3/8" x60' ST ST 3 PART	134"	120"						14" to 54"
40,000#	C10 x 8.64 LB/FT 10 H x .526 2.88 W x .437 x 206 OAL	14 H x .30 8 W x .60 216" Long		3- 7/16" x60' ST ST 3 PART	134"	120"						14" to 54"
56,000#	C10 x 8.64 LB/FT 10 H x .526 2.88 W x .437 x 230 OAL	2 Double 12 H x .31 7 W x .62 240" Long		4- 7/16" x60' ST ST 4 PART	158"	120"						14" to 54"