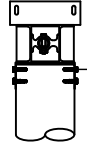


GOLDEN ENGINEERED 4 POST, 4 MOTOR SEA DRIVE BOAT LIFTS

WOOD PILE ATTACHMENT

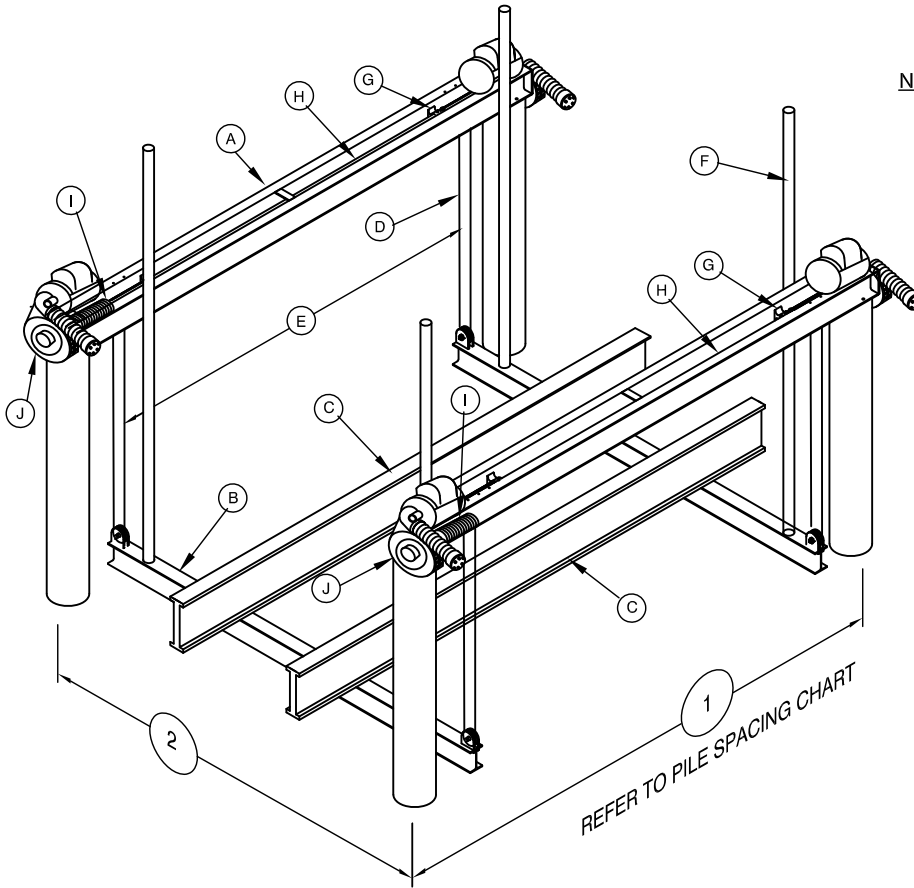
STAINLESS STEEL PILING MOUNT BRACKET- RECOMMENDED ATTACHMENT BASED ON BRACKET CONFIGURATION. VERIFY ADEQUACY BASED ON ACTUAL SITE CONDITIONS:
 4-3/8" STAINLESS STEEL LAG SCREWS USED TO CONNECT THE BRACKETS TO THE PILING AND
 2-3/8" STAINLESS STEEL CARRIAGE BOLTS USED TO CONNECT THE BRACKETS TO THE LIFT CHANNELS



NOTE: CONCRETE PILE (NOT SHOWN)

(2) 316 STAINLESS STEEL SIMPSON TITEN FASTENERS WITH MIN. 4" EMBED. INSTALL ONE INSIDE AND ONE OUTSIDE 8" BELOW TOP OF PILE.

5/8" DIAMETER FOR 30-40K LIFTS
 3/4" DIAMETER FOR 56K LIFT



PILE SPACING CHART
 The boat center of gravity needs to be set in the center of the top beam

Lift Capacity Lb.	Recommended		Recommended	
	*1" Dimension Ft.	*2" Dimension Ft.	Wood Pile Inch Dia.	Conc. Pile Inch Dims.
30,000	16	16	12	12 x 12
32,000	16	16	12	12 x 12
40,000	16	18	12	12 x 12
56,000	18	20	12	12 x 12

NOTE: THIS STRUCTURE HAS BEEN DESIGNED FOR LOADS ASSOCIATED WITH AN ULTIMATE WIND SPEED OF 180 MPH, EXPOSURE "D", RISK CATEGORY I, CALCULATED PER FLORIDA BUILDING CODE 8th EDITION 2023, ASCE/SEI 7-22 AND ADM-2020. BOATS SHALL NOT BE STORED ON LIFTS DURING HIGH WIND EVENTS.

IN GENERAL, PILING PENETRATION TO BE A MINIMUM OF 10' INTO THE SAND BOTTOM OR 5' INTO THE ROCK STRATA. SUB-SURFACE CONDITIONS CAN VARY GREATLY, THE CONTRACTOR SHALL VERIFY ALL PILE CAPACITIES. ALL PILING TO BE 2.5 C.C.A. PRESSURE TREATED WOOD. ALL STRUCTURAL MEMBERS TO BE 6061-T6 ALUMINUM.

SUMMARY OF DESIGN FEATURES

LIFT CAPACITY Lbs	(A) TOP BEAM CHANNEL 2 EACH INCHES	(B) CRADLE I-BEAM 2 EACH INCHES	(C) BUNK BOARDS (AL)	(D) CABLE SIZE INCHES	(E) CABLE SPREAD IN	(F) GUIDE POST HEIGHT IN	(G) BEARINGS	(H) DRIVE SHAFT	(I) WINDER DIA	(J) MOTOR HP VOLTAGE	INCHES OF LIFT PER MIN	RECOM PILING SIZES
	INCHES	INCHES	10 x 6 x 2 1/2" ALUM CARPATED	INCHES	IN	IN	10 - 2" H.D. EXTRUDED 6061-T6 ALUM.	1-15/16" DIA. SCH 80 GALV PIPE	3-1/2" DIA SCH 80 ALUM PIPE W/ CABLE GROOVES	4 - 1-1/2 HP 120V/20A 240V/10A		
30,000#	C10 x 8.64 LB/FT 10 H x .526 2.88 W x .437 x 206 OAL	12H x .31 7 W x .62 x 192 Long		4- 1/2" x30" ST ST 2 PART	134"	120"	10 - 2" H.D. EXTRUDED 6061-T6 ALUM.			4 - 1-1/2 HP 120V/20A 240V/10A	19.85"	12"
32,000#	C10 x 8.64 LB/FT 10 H x .526 2.88 W x .437 x 206 OAL	14 H x .30 8 W x .60 192" Long		3- 3/8" x60" ST ST 3 PART	134"	120"	10 - 2" H.D. EXTRUDED 6061-T6 ALUM.			4 - 1-1/2 HP 120V/20A 240V/10A	9.90"	12"
40,000#	C10 x 8.64 LB/FT 10 H x .526 2.88 W x .437 x 206 OAL	14 H x .30 8 W x .60 216" Long		3- 7/16" x60" ST ST 3 PART	134"	120"	10 - 2" H.D. EXTRUDED 6061-T6 ALUM.			4 - 1-1/2 HP 120V/20A 240V/10A	9.90"	12"
56,000#	C10 x 8.64 LB/FT 10 H x .526 2.88 W x .437 x 230 OAL	2 Double 12 H x .31 7 W x .62 240" Long		4- 7/16" x60" ST ST 4 PART	158"	120"	10 - 2" H.D. EXTRUDED 6061-T6 ALUM.			4 - 1-1/2 HP 120V/20A 240V/10A	9.90"	12"