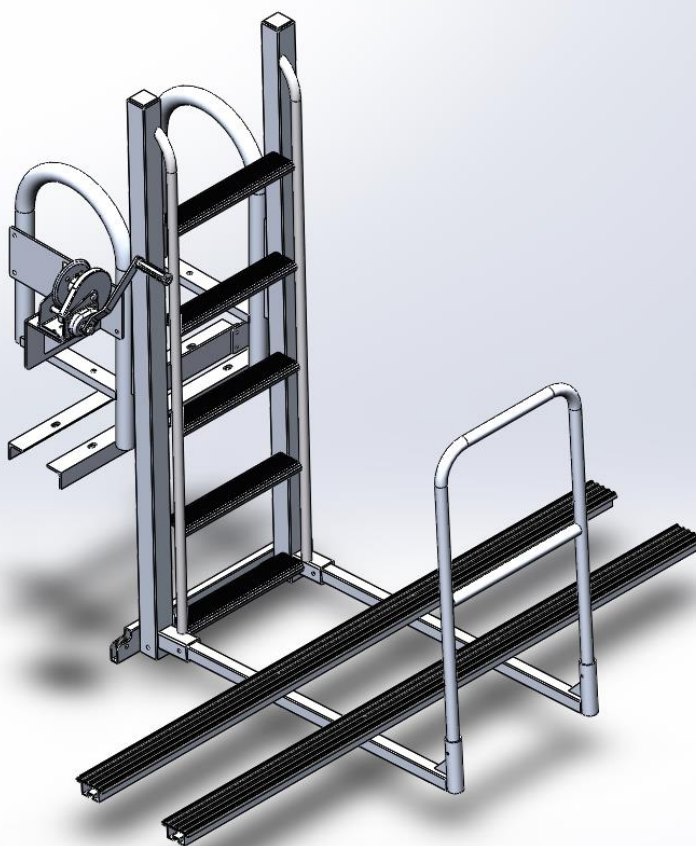




INSTALLATION MANUAL

MODELS:

- STANDARD
- EXTRA WIDE



KAYAK LIFT

17611 East St, North Fort Myers, FL 33917
(239) 337-4141

GoldenMarineSystems.com GoldenBoatLifts.com

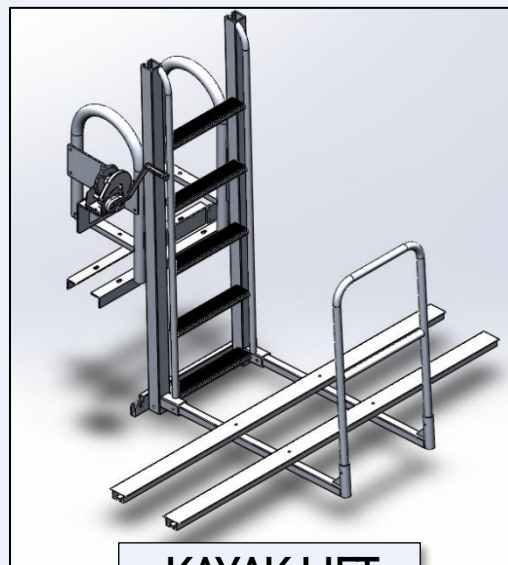


REVISION A
PUBLISHED 10/18/2020



TABLE OF CONTENTS

TABLE OF CONTENTS.....	2
INTRODUCTION & FEATURES.....	2
SAFETY REQUIREMENTS.....	3
SPECIFICATIONS.....	4
PART IDENTIFICATION TABLE.....	5
REQUIRED PARTS & HARDWARE.....	5
GENERAL ASSEMBLY.....	7
KAYAK LAUNCH MOUNT LOCATION.....	7
ATTACH CRADLE.....	8
ATTACH GRAB RAIL.....	9
ATTACH KAYAK LAUNCH BUNK.....	10
MOUNT KAYAK LAUNCH.....	11
REFERENCE NOTES.....	12



KAYAK LIFT

INTRODUCTION

We at Golden are proud to introduce the Kayak Launch to our line of lifts.

The Kayak Launch is designed to easily lower small vessels into the water directly off a seawall or dock.

This mounted lift is manufactured with T-6 marine grade aluminum and stainless-steel hardware. This lift is ideal for freshwater and saltwater applications and requires no shore power.

The Kayak Launch was intentionally engineered to minimize the space needed to operate the lift, making it extremely versatile for many applications.

All non-adjustable components for the Kayak Lift are welded together, decreasing premature loosening of parts.

We use only eco-friendly biodegradable fluid. It is 100 % water soluble and meets the strict guidelines of the US Fish & Wildlife Service as non-toxic.

FEATURES

- Simple Installation.
- Available in 5 and 7 Step.
- Welded Aluminum Frame / Stainless Steel Cables.
- 4' or 6' Travel Distance options Available.
- Adjustable Bunks for Varying Kayak Width.
- Adapts to Fluctuating Water Levels.
- Brake Winch Controls Up-And-Down Movement.
- Grab Rails Provide Stability During Boarding.
- Standard and XW Models Support Kayaks Up To 250 Pounds.
- Heavy Duty Models Support Kayaks Up To 350 Pounds.
- 5 Step Launch Models
 - 5-STEP STANDARD: W/ 4' TRAVEL, 6' BUNKS, 34" CLEAR ENTRY
 - XW5-STEP: W/ 4' TRAVEL, 6' BUNKS, 43" CLEAR ENTRY
 - 5-STEP HEAVY DUTY: W/ 3' TRAVEL, 6' BUNKS, 56" CLEAR ENTRY
- 7 Step Launch Models
 - 7-STEP STANDARD: W/ 6' TRAVEL, 6' BUNKS, 43" CLEAR ENTRY
 - XW7-STEP: W/ 6' TRAVEL, 6' BUNKS, 43" CLEAR ENTRY
 - 7-STEP HEAVY DUTY: W/ 5' TRAVEL, 6' BUNKS, 56" CLEAR ENTRY



SAFETY

**SAVE THESE SAFETY INSTRUCTIONS
FOR FUTURE REFERENCE**

SAFETY INFORMATION (READ THOROUGHLY)

The KAYAK BOAT LIFT was designed, tested and certified to be installed in the recommended area approved by certified and approved personnel under the specific installation and operation guidelines laid out in the installation and operation manuals issued by GOLDEN BOAT LIFTS.

Note: Any installation or operation methods outside the guidelines described within the manual(s) mentioned above will void the product warranty.

Note: It is recommended that a trained professional install the Kayak Launch.

Note: Before beginning installation of the Kayak Launch, please ensure that the area selected for installation meets all local and state guidelines and regulations.

Note: To avoid damage to the Kayak Launch and/or personal injury/death, carefully follow each step outlined in the manual(s).

Note: Before beginning installation of the Kayak Launch, clear adequate space around the installation site so that all parts, hardware, and tools can be laid out in a safe and organized fashion.



HEAVY OBJECTS

Failure to follow this warning can result in personal injury or death and/or damage to the Kayak Launch.

The Kayak Launch has heavy parts. To avoid bodily harm and/or damage to the Kayak Launch, ensure that proper handling and lifting techniques are used.

When completing the steps outlined in this Installation Manual, please ensure that only proper handling and lifting techniques are used to transport parts to desired locations. In some circumstances, machinery may be required to move individual parts.

The Kayak Launch comes with mechanical winch that operates using rotating gears. Please keep extremities away from winch to ensure bodily harm or damage to winch does not occur.



MOVING PARTS HAZARD

Failure to follow this warning can result in personal injury or death and/or damage to the Kayak Launch.

The Kayak Launch has moving parts while in operation. To avoid bodily harm and/or damage to the Kayak Launch, ensure the lift is operated from the dock or seawall, and never on the lift or vessel.

Note: Never operate a lift while on the lift or inside the vessel.

After completing the steps outlined in the KAYAK INSTALLATION MANUAL, the Kayak Launch should be ready to operate.

Note: Before operation, it is important to verify that every step outlined in the KAYAK INSTALLATION MANUAL.

To operate the Kayak Launch, please reference the KAYAK LAUNCH OPERATING MANUAL.

Note: Never Exceed the maximum capacity of the lift.

Note: Never go under the lift or vessel, especially when the lift is in the raised position. Never operate a lift while on the lift or inside the vessel.

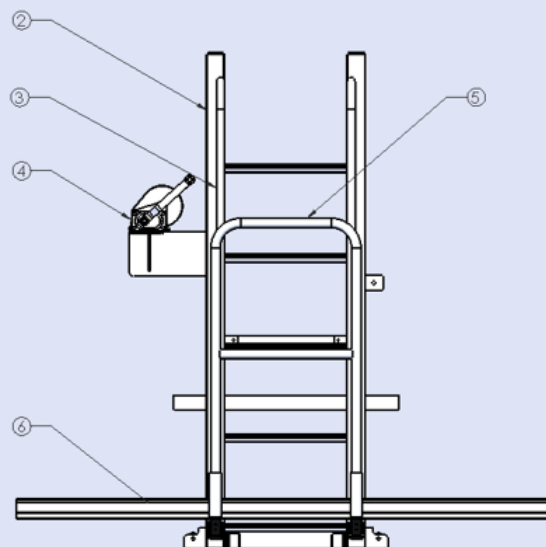
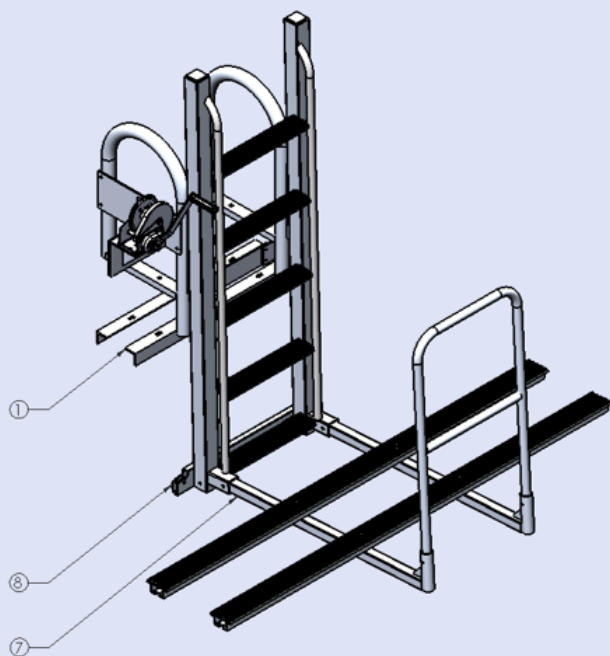
Note: It is recommended that the Kayak Launch be raised to the upward position when not in use.

SAVE THESE INSTRUCTIONS



SPECIFICATIONS

KAYAK LAUNCH	5-STEP	7-STEP
STANDARD	<ul style="list-style-type: none"> WEIGHT: ≈ 100 lbs. (45 kg) MAX CAPACITY: 250 lbs. (114 kg) MAX HEIGHT: 74-1/4" TRAVEL DISTANCE: 4' BUNK LENGTH: 6' 	<ul style="list-style-type: none"> WEIGHT: ≈ 118 lbs. (54 kg) MAX CAPACITY: 250 lbs. (114 kg) MAX HEIGHT: 98-1/4" TRAVEL DISTANCE: 6' BUNK LENGTH: 6'
XW (EXTRA WIDE)	<ul style="list-style-type: none"> WEIGHT: ≈ 102 lbs. (46 kg) MAX CAPACITY: 250 lbs. (114 kg) MAX HEIGHT: 74-1/4" TRAVEL DISTANCE: 4' BUNK LENGTH: 6' 	<ul style="list-style-type: none"> WEIGHT: 125 lbs. (57 kg) MAX CAPACITY: 250 lbs. (114 kg) MAX HEIGHT: 98-1/4" TRAVEL DISTANCE: 6' BUNK LENGTH: 6'



KAYAK LIFT	1	2	3	4	5	6	7	8
CAPACITY	UNDER-DOCK SUPPORT	LADDER LEG	LADDER HANDRAIL	WINCH	GRABRAIL	BUNK	CRADLE	PULLEY SUPPORT
250 LB.	30" LENGTH ALUMINUM ANGLE	2.5" X 66" ALUMINUM TUBE	60" LENGTH ALUMINUM TUBE	STAINLESS STEEL BRAKE WINCH	40" HEIGHT ALUMINUM	72" LENGTH	40" - 60" LENGTH ALUMINUM TUBE	ALUMINUM
350 LB.								

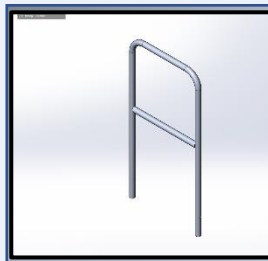


PART IDENTIFICATION



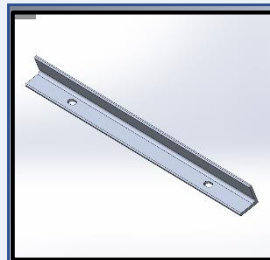
Ladder Assembly
QTY: (1)

PN: GBL-01-0270



Grab Rail
QTY: (1)

PN: GBL-KAYAK-SX-GR-W



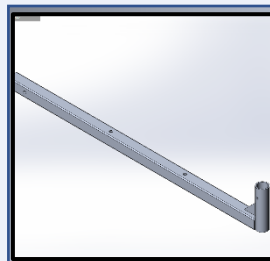
Under Dock Support
QTY: (2)
**Optional

PN: GMI-01-0317



Bunk
QTY: (2)

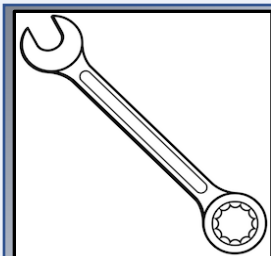
PN: GBL-KAYAK-SX-BNK-A



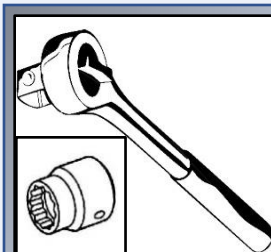
Cradle
QTY: (2)

PN: GBL-KAYAK-S-CRDL-W

REQUIRED TOOLS

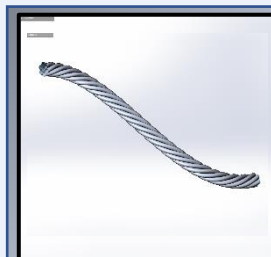


7/16" Open End Wrench
9/16" Open End Wrench

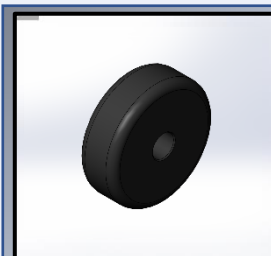


3/8" Drive Ratchet
7/16" Socket
9/16" Socket

REPLACEMENT PART(S)



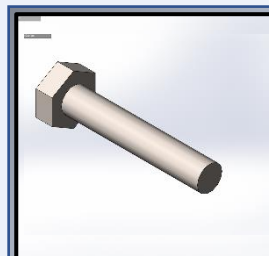
3/16" Braided Cable
5-Step: 20'
7-Step: 25'



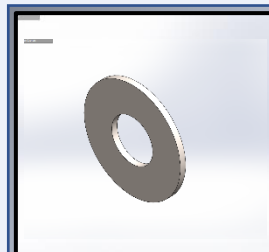
Kayak Internal Roller
QTY Supplied: (8)

PN: GMI-03-0013

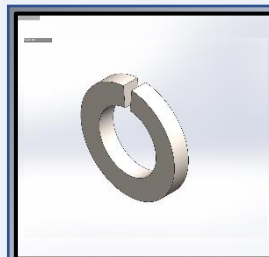
HARDWARE



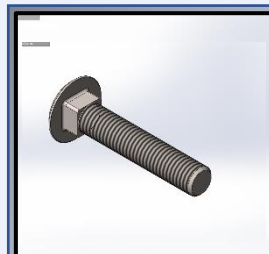
Hex Bolt
1/4" X 2-1/2" (2)
3/8" X 2-1/2" (2)



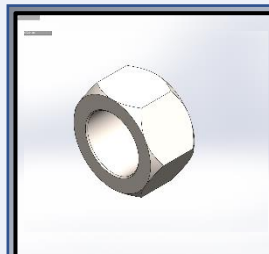
Washer
1/4" (4)
3/8" (12)



Lock Washer
3/8" (4)



Carriage Bolt
3/8" X 4" (4)



Hex Nut
3/8" (4)
Lock Nut
1/4" (2)
3/8" (2)



GENERAL ASSEMBLY INSTRUCTIONS

1. Please read all instruction provided before starting the installation of the Kayak Launch Lift.
2. It is recommended that the Kayak Launch Lift is installed by trained professionals only.
3. Please ensure that there is an appropriate area cleared in order to lay out all components, parts, and applicable tools to ensure there is nothing missing or damaged before starting installation process.

KAYAK LAUNCH MOUNT LOCATION

NOTE: Inspect all pulleys, verifying all cables are laying evenly in grooves.

NOTE: Inspect all bolted structures to ensure they are secure.

1. Using the mounting holes, shown in Figure 1, at the bottom of the Ladder Assembly as a template, mark the location of the holes on the sea wall or dock where the Kayak Launch Lift will be installed.

NOTE: If mounting to dock: ensure holes being drilled are not directly on dock stringers.

2. Using appropriate drill, predrill Kayak Lift mounting holes into base structure.

NOTE: Before mounting the ladder to the base but AFTER predrilling the holes in the selected base, many installers will complete the entire Kayak Lift assembly before bolting the ladder to the selected base.

REQUIRED PARTS



Ladder Assembly
QTY: (1)

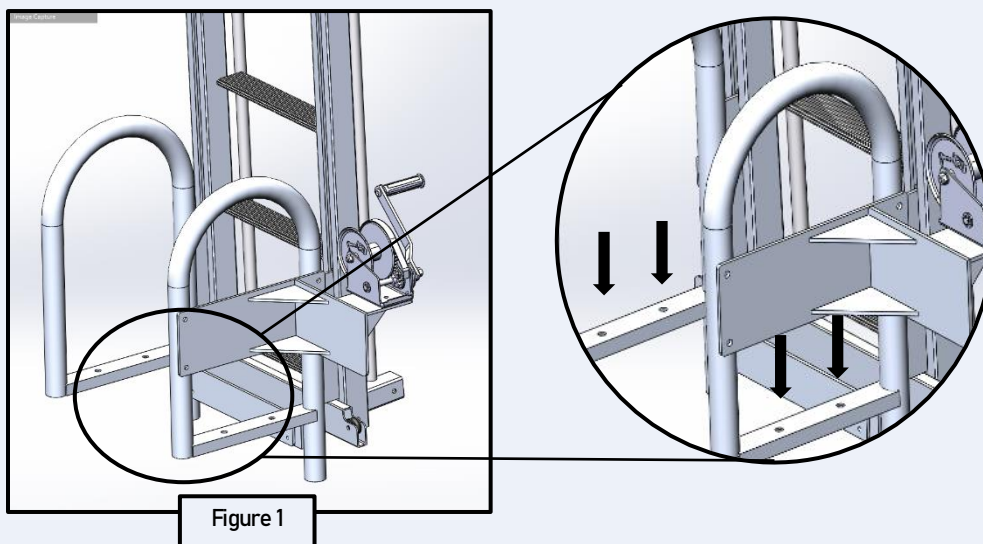


Figure 1



ATTACH CRADLES

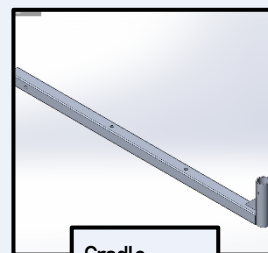
NOTE: It is recommended to use more than one person for this step to ensure the lift stays upright at all times.

1. With the ladder assembly standing straight up, slide the Cradle into the cradle support located at the bottom of the ladder assembly as shown in Figure 2 ensuring the holes are aligned.
2. Attach one (1) 3/8" Washer to one (1) 3/8" x 3" Hex Bolt and insert it into the cradle mount hole. Slip a 3/8" Lock Washer, 3/8" Washer and 3/8" Hex Nut onto the protruding end of the bolt and hand tighten. Repeat for remaining cradle.

REQUIRED PARTS



Ladder
QTY: (1)



Cradle
QTY: (2)

HARDWARE	QTY:
3/8" X 2-1/2" Hex Bolt	2
3/8" Lock Nut	2
3/8" Washer	2

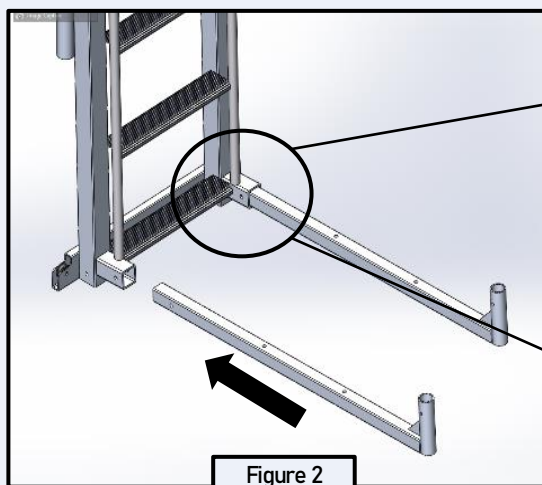
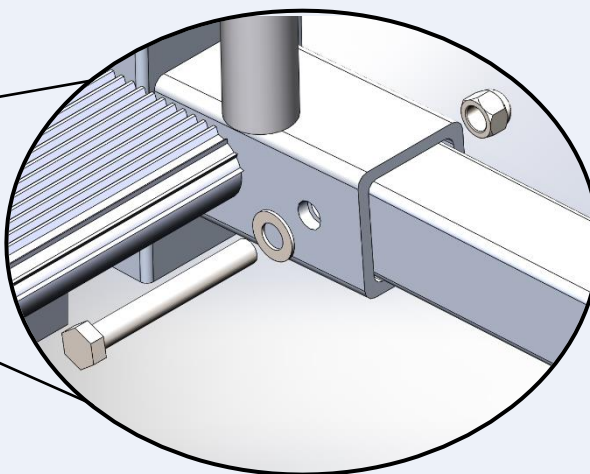


Figure 2



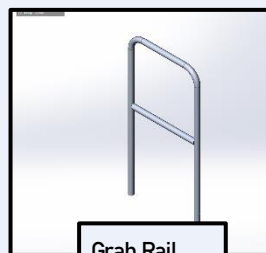


ATTACH GRAB RAIL

NOTE: It is recommended to use more than one person for this step to ensure the lift stays upright at all times.

1. Align the two (2) ends of the Grab Rail so they are in line with the cylindrical ends of the Cradles and insert fully as shown in Figure 3.
2. Attach one (1) 1/2" Washer to one (1) 1/2" x 2-1/2" Hex Bolt and insert it into the Grab Rail mounts. Slip a 1/2" Lock Washer, 1/2" Washer and 1/2" Hex Nut onto the protruding end of the bolt and hand tighten. Repeat for remaining end of the Grab Rail.

REQUIRED PARTS



HARDWARE	QTY:
1/4" x 2-1/2" Hex Bolt	2
1/4" Lock nut	2
1/4" Washer	4

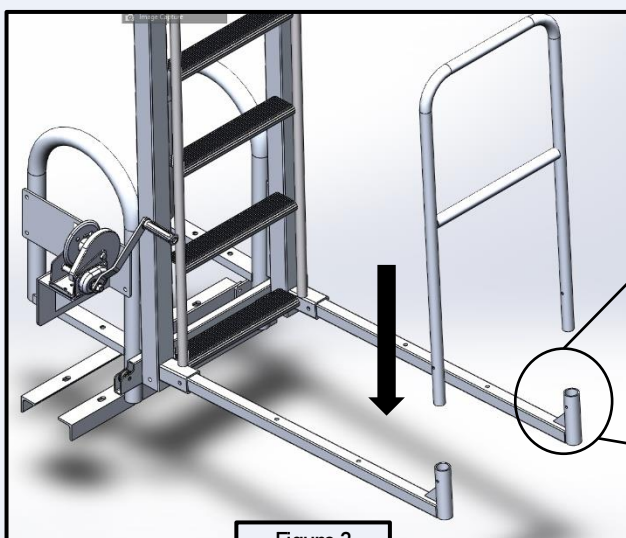
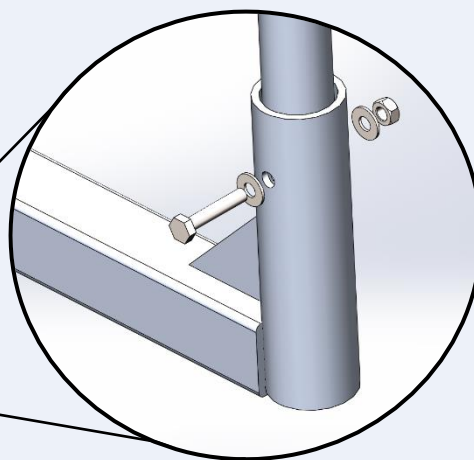


Figure 3





ATTACH KAYAK BUNKS

NOTE: It is recommended to use more than one person for this step to ensure the lift stays upright at all times.

1. Align the two (2) holes in each bunk with the mounting holes in each cradle as shown in Figure 4.

NOTE: Ensure the rubber side of the Bunks are oriented upward.

2. Attach one (1) 3/8" Washer to one (1) 3/8" x 2-1/2" Hex Bolt and insert it into the top of the Bunk and through the Cradle. Slip a 3/8" Lock Washer, 3/8" Washer and 3/8" Hex Nut onto the protruding end of the bolt and hand tighten. Repeat three more times.

REQUIRED PARTS



Kayak Bunk
QTY: (2)

HARDWARE	QTY:
3/8" x 4" Carriage Bolt	4
3/8" Hex Nut	4
3/8" Lock Washer	4
3/8" Washer	4

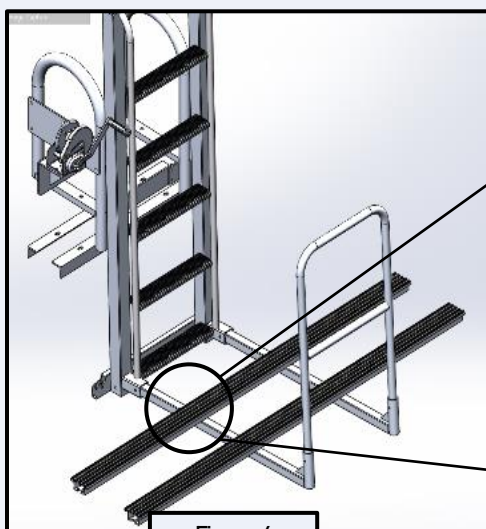
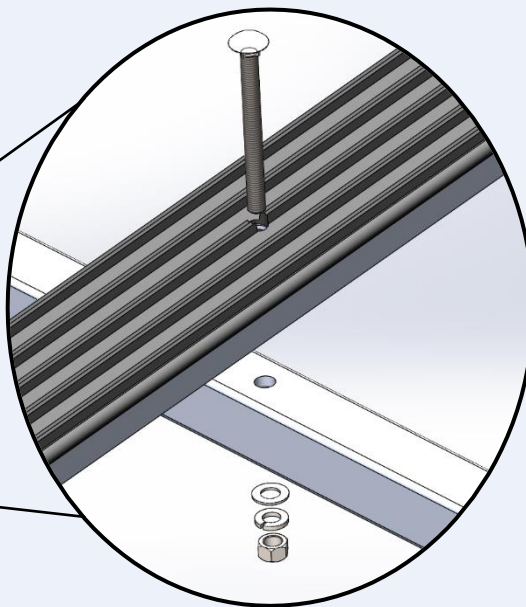


Figure 4





NOTE: Before proceeding, please ensure all previous steps were completed to avoid product or bodily damage.

NOTE: Before proceeding to the next step, fully tighten all hardware, fully securing the kayak Launch.

NOTE: It is recommended to use lifting equipment to move the assembled Kayak launch Lift.

MOUNTING KAYAK LAUNCH (Seawall)

1. Carefully realign the Kayak Launch mounting holes with the predrilled holes created on page 7.
2. Insert ***** bolts into Kayak mounting holes and tighten using appropriate tool.

MOUNTING KAYAK LAUNCH (Dock)

1. Carefully realign the Kayak Launch mounting holes with the predrilled holes created on page 7.
2. Insert ***** bolts into Kayak mounting holes, exposing the protruding ends of the bolts on the underside of the dock as shown in Figure 5.

NOTE: Bolts must extend past the stringers on the underside of the dock.

3. With the Ladder Rungs oriented so the open ends are facing each other, as shown in figure 7, slide them up against the bottom of the dock stringers, making sure the protruding bolts are aligned with the Ladder Rung mounting holes.

NOTE: It is required that the Ladder Rungs run perpendicular to the stringers as shown in Figures 6 & 7. If the stringers run parallel to the ladder, rotate the Ladder Rungs 90° in respect to the figures shown below.

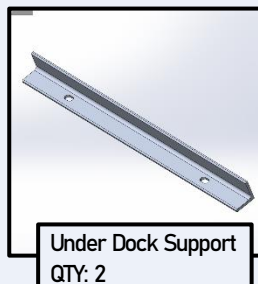
NOTE: Verify all hardware is securely fastened and that the Winch, Pulleys, and Cable are all still aligned properly.

NOTE: Verify that there is nothing obstructing the movement of the Kayak Launch; use the Winch to test the movement of the lift.

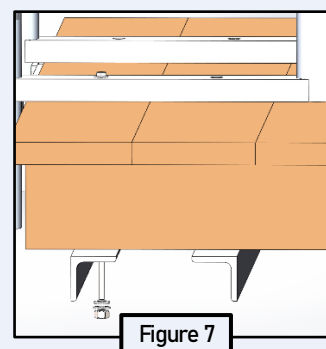
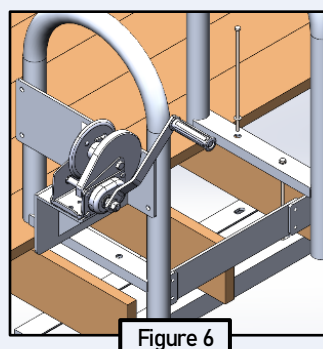
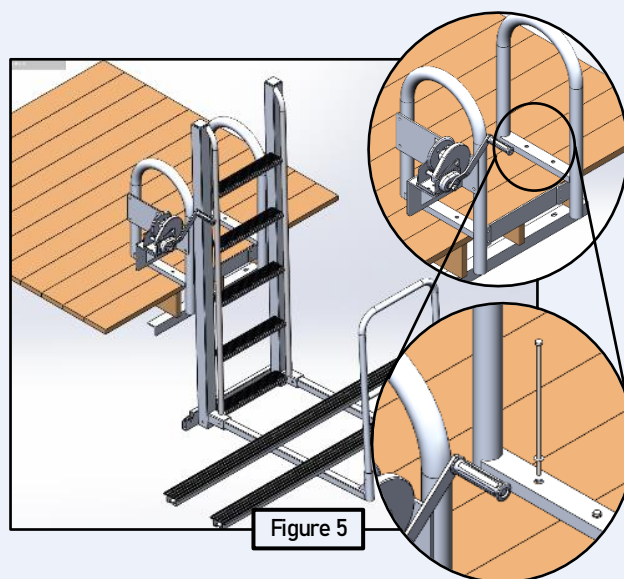
REQUIRED PARTS (Seawall)

HARDWARE	QTY:
Not Included	N/A

REQUIRED PARTS (Dock)



HARDWARE	QTY:
Not Included	N/A





REFERENCE NOTES

Kayak Launch Lift

Model: Standard

INSTALLATION PROVIDER: _____ INSTALLATION DATE: _____

INSTALLATION ADDRESS: _____

INSTALLATION CHECKLIST:

STEP	DATE/TIME	INITIAL	NOTES
SAFETY REQUIREMENTS			
PART IDENTIFICATION TABLE			
REQUIRED PARTS & HARDWARE			
KAYAK LAUNCH MOUNT LOCATION			
ATTACH CRADLE			
ATTACH GRAB RAIL			
ATTACH KAYAK LAUNCH BUNKS			
MOUNT KAYAK LAUNCH			
FINAL HARDWARE/ OPERATION CHECK			

I, _____, hereby verify that all guidelines and procedures were read and followed to the best of my ability.

SIGNATURE : _____

DATE OF COMPLETION: _____