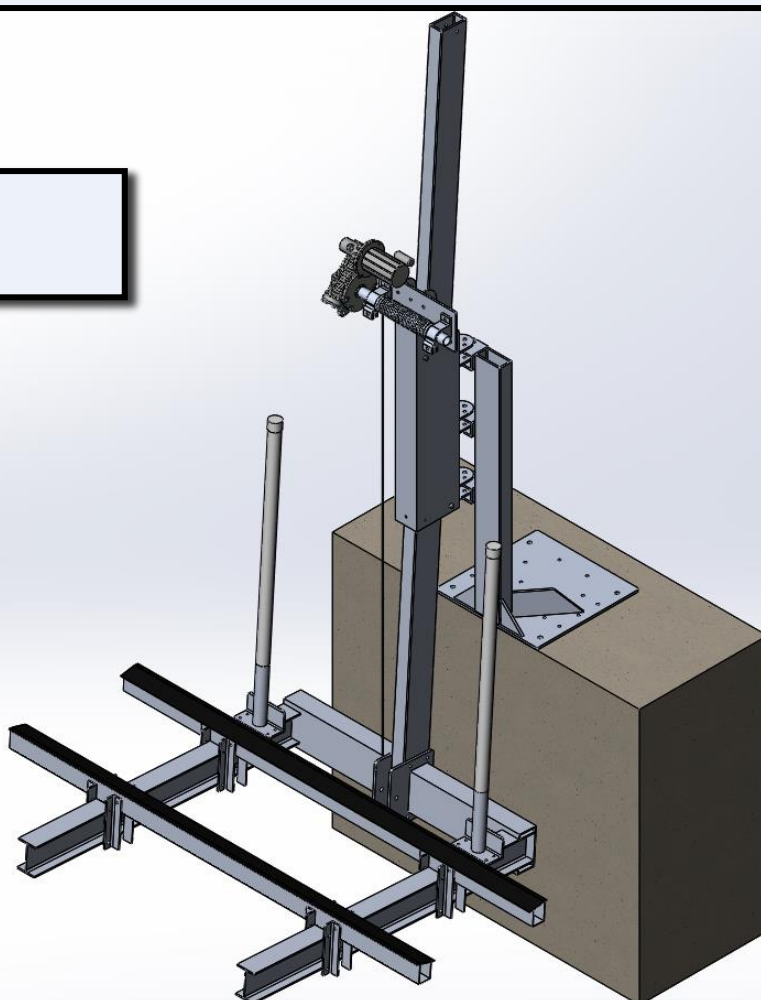




INSTALLATION MANUAL

MODELS:
JS-1500R



SWINGER LIFT

17611 East St, North Fort Myers, FL 33917
(239) 337-4141

GoldenMarineSystems.com GoldenBoatLifts.com

GOLDEN
REVISION A
PUBLISHED 10/18/2020



TABLE OF CONTENTS	
TABLE OF CONTENTS.....	2
INTRODUCTION & FEATURES.....	2
SAFETY REQUIREMENTS.....	3
SPECIFICATIONS.....	4
PART IDENTIFICATION TABLE.....	5
REQUIRED PARTS & HARDWARE.....	6
GENERAL ASSEMBLY.....	7
SWINGER LIFT MOUNT LOCATION.....	7
ATTACH PILING MOUNT.....	8
ATTACH SEAWALL MOUNT.....	9
MOUNT MAST & MAST HOUSING.....	10
ATTACH CRADLE ARMS & CABLE.....	11
MOUNT BUNK BRACKETS.....	12
MOUNT BUNKS.....	13
MOUNT SEADRIVE.....	14
MOUNT MOTOR.....	15
REFERENCE NOTES.....	16

INTRODUCTION

We at Golden are proud to introduce the Swinger Lift to our line of lifts.

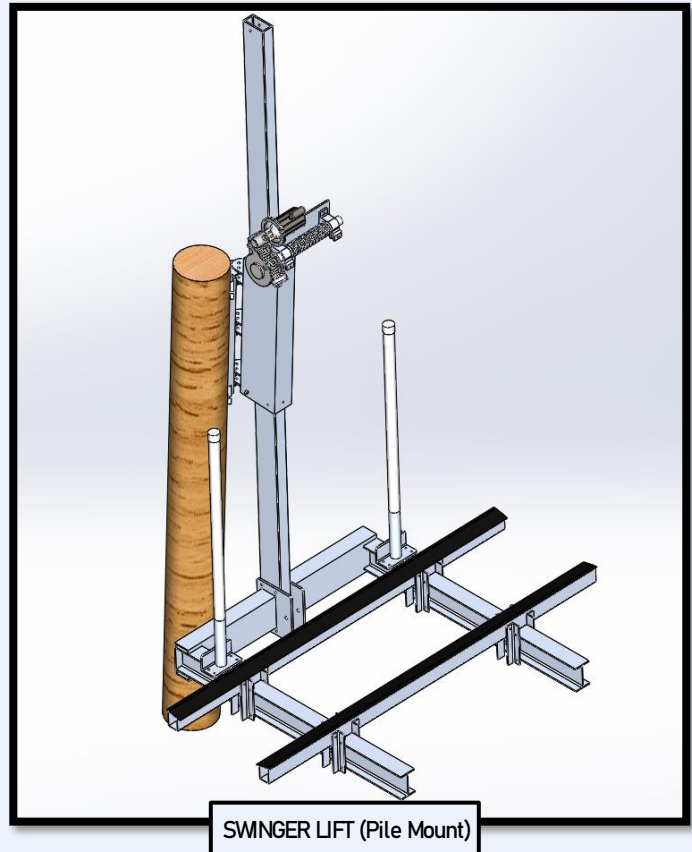
The Swinger Lift is designed to easily lower small vessels into the water directly off a seawall or dock.

This mounted lift is manufactured with T-6 marine grade aluminum and stainless-steel hardware. This lift is ideal for freshwater and saltwater applications and requires no shore power.

The Swinger Lift was intentionally engineered to minimize the space needed to operate the lift, making it extremely versatile for many applications.

All non-adjustable components for the JS-1500R Swinger Lift are welded together, decreasing premature loosening of parts.

We use only eco-friendly biodegradable fluid. It is 100 % water soluble and meets the strict guidelines of the US Fish & Wildlife Service as non-toxic.



FEATURES

- Simple Installation Procedure
- Seawall and Piling Mount Options Available
- Welded 6061-T6 Marine Grade Aluminum Frame / 300 Series Stainless Steel Hardware and Cables
- 13' or 15' Travel Distance Options Available (3.9m or 4.5m)
- Adjustable Bunks for Varying PWC Width
- Adapts to Fluctuating Water Levels
- Brake Winch Controls Up-And-Down Movement
- Grab Rails Provide Stability During Boarding
- Standard and XW Models Support JS-1500R Swingers Up To 250 Pounds (113 kg)
- Supports PWC's Up To 1,500 Pounds (680 kg)



SAFETY

**SAVE THESE SAFETY INSTRUCTIONS
FOR FUTURE REFERENCE**

SAFETY INFORMATION (READ THOROUGHLY)

The JS-1500R PWC (Personal Water Craft) Swinger Lift was designed, tested and certified to be installed in the recommended area approved by certified and approved personnel under the specific installation and operation guidelines laid out in the installation and operation manuals issued by GOLDEN BOAT LIFTS.

Note: Any installation or operation methods outside the guidelines described within the manual(s) mentioned above will void the product warranty.

Note: It is recommended that a trained professional install the JS-1500R Swinger Lift.

Note: Before beginning installation of the Swinger Lift, please ensure that the area selected for installation meets all local and state guidelines and regulations.

Note: To avoid damage to the lift and/or personal injury/death, carefully follow each step outlined in the manual(s).

Note: Before beginning installation of the Swinger Lift clear adequate space around the installation site so that all parts, hardware, and tools can be laid out in a safe and organized fashion.

! CAUTION !

HEAVY OBJECTS

Failure to follow this warning can result in personal injury or death and/or damage to the Swinger Lift.

The Swinger Lift has heavy parts. To avoid bodily harm and/or damage to the Swinger Lift, ensure that proper handling and lifting techniques are used.

When completing the steps outlined in this Installation Manual, please ensure that only proper handling and lifting techniques are used to transport parts to desired locations. In some circumstances, machinery may be required to move individual parts.

The Swinger Lift comes with a RBC DC 3/4 HP 1725 RPM motor which provides the power for operation of the Swinger Lift.

Note: After installation of the Swinger Lift, please reference the motor manufacturer manual(s) to continue installation of the power supply for the Swinger Lift. Failure to reference and follow these instructions before attempting to operate the Swinger Lift may cause damage to the lift and/or personal injury/death.

! WARNING !

MOVING PARTS HAZARD

Failure to follow this warning can result in personal injury or death and/or damage to the Swinger Lift.

The Swinger Lift has moving parts while in operation. To avoid bodily harm and/or damage to the Swinger Lift, ensure the lift is operated from the dock or seawall, and **never** on the lift or vessel.

Note: Never operate a lift while on the lift or inside the vessel.

After completing the steps outlined in the JS-1500R SWINGER INSTALLATION MANUAL, the Swinger Lift should be ready to operate.

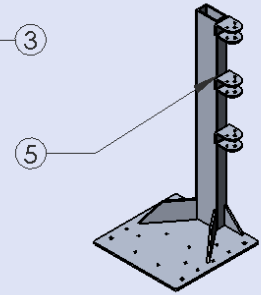
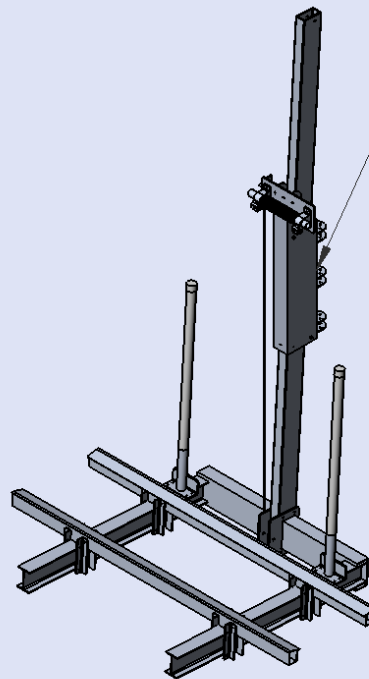
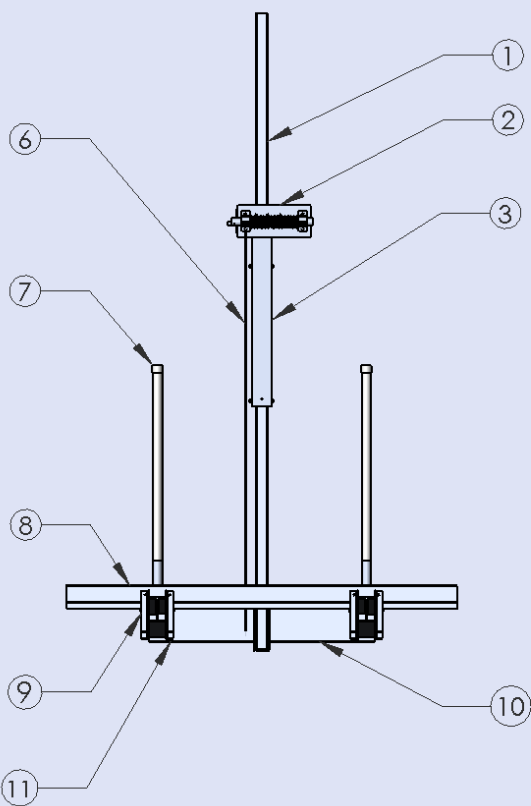
Note: Before operation, it is important to verify that every step outlined in the JS-1500R SWINGER INSTALLATION MANUAL

Note: Never Exceed the maximum capacity of the lift.

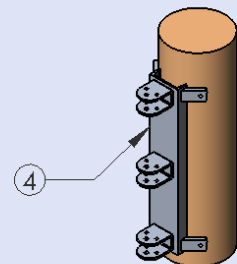
Note: Never go under the lift or vessel, especially when the lift is in the raised position. Never operate a lift while on the lift or inside the vessel.

Note: It is recommended that the Swinger Lift be raised to the upward position when not in use.

SAVE THESE INSTRUCTIONS



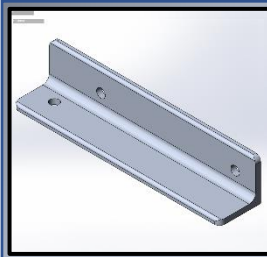
SEAWALL MOUNT



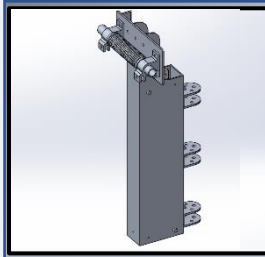
PILE MOUNT

JS-1500R	1	2	3	4	5	6	7	8	9	10	11
CAPACITY	MAST	MAST HOUSING ASSEMBLY	MOUNTING BRACKET(S)	PIILING MOUNT	SEAWALL MOUNT	CABLE	GUIDEPOST(S)	BUNK(S)	BUNK BRACKET	CRADLE BEAM(S)	CRADLE ARM(S)
1,500 lb. (680 kg)	STANDARD 4 X 6 X 156" EXTENDED 4 X 6 X 180"	1/4 X 5 X 10" ALUMINUM TUBE	ALUMINUM	1.72 X 4" / .320" ALUMINUM CHANNEL	ALUMINUM	1/4" DIA. SS DOUBLE PULL	1.5" SCH. 40 ALUMINUM	2 X 8 X 96"	2 X 2 X .25" ALUMINUM ANGLE	4 X 8 X .25" ALUMINUM TUBE	4.03 X 4 X 6" ALUMINUM I-BEAM

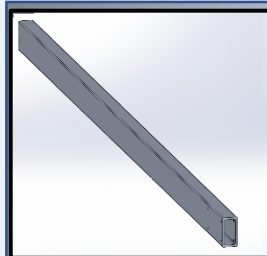
PART IDENTIFICATION



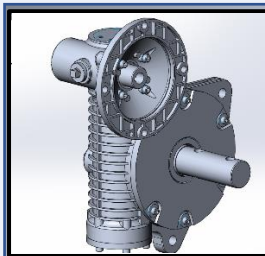
BUNK MOUNT BRACKET
QTY: (8)



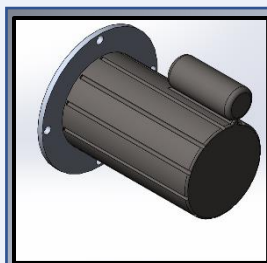
MAST HOUSING
QTY: (1)



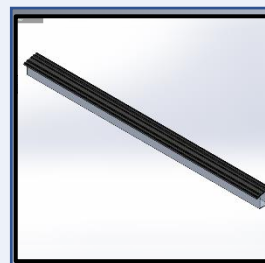
MAST
QTY: (1)



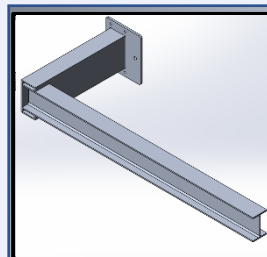
SEA-DRIVE
QTY: (1)



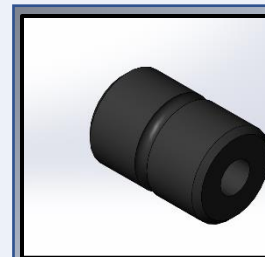
3/4 HP MOTOR
QTY: (1)



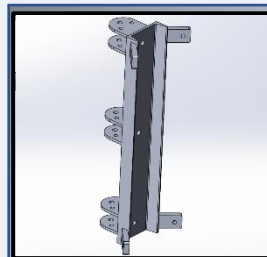
BUNK
QTY: (1)



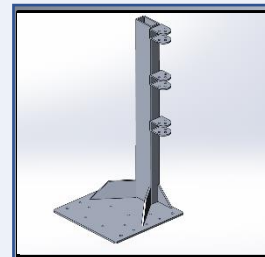
CRADLE ARM
QTY: (2)



RETURN ROLLER
QTY: (1)

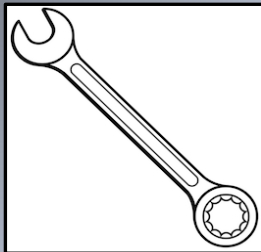


PILING MOUNT
QTY: (1)
*PILE MOUNTED

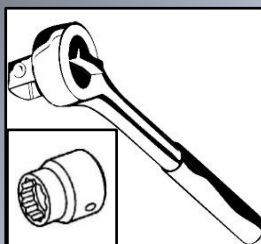


SEAWALL MOUNT
QTY: (1)
*SEAWALL MOUNTED

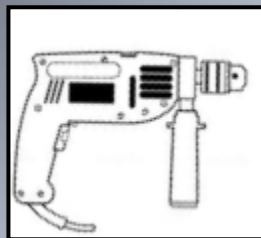
REQUIRED TOOLS



9/16" Open End Wrench
3/4" Open End Wrench
15/16" Open End Wrench

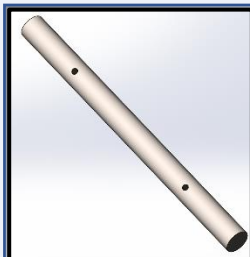


3/8" Drive Ratchet
9/16" Socket
3/4" Socket
15/16" Socket



Power Drill
**5/8" Auger Drill Bit

HARDWARE

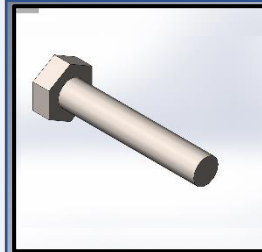


MAST STOP PIN QTY:
1/2" X 6-1/2" (1)

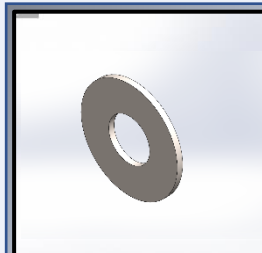


COTTER PIN QTY:
1/8" (2)

HARDWARE (cont.)

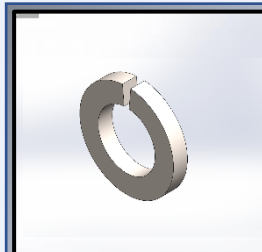


Hex Bolt QTY:
3/8" X 1" (5)
1/2" X 1-1/2" (4)
1/2" X 2-1/2" (2)
1/2" X 4-1/2" (2)
1/2" X 5" (5)
5/8" X 4-1/2" (4)
3/4" X 5" (1)
5/8" x 4-1/4" (w/ pin) (1)



Flat Washer QTY:
3/8" (9)
1/2" (10)
5/8" (11)
3/4" (3)

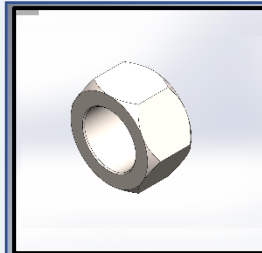
Nylon Washer QTY:
3/4" (6)



Lock Washer QTY:
3/8" (5)
1/2" (10)
5/8" (5)
3/4" (2)



Lag Bolt QTY:
5/8" X 4" (5)



Finish Nut QTY:
3/8" (5)
1/2" (10)
5/8" (5)
3/4" (2)



GENERAL ASSEMBLY INSTRUCTIONS

1. Please read all instruction provided before starting the installation of the JS-1500R Swinger Lift.
2. It is recommended that the Swinger Lift is installed by trained professionals only.
3. Please ensure that there is an appropriate area cleared in order to lay out all components, parts, and applicable tools to ensure there is nothing missing or damaged before starting installation process.

NOTE: Inspect all pulleys, verifying all cables are laying evenly in grooves.

NOTE: Ensure the drill bit is aligned correctly to avoid drilling holes at an angle as this may cause damage to the piling or lift.

SWINGER LIFT LOCATION PREP (Mounting on Piling)

1. Measure the height from the top of the dock decking to the top of the piling; the height must be a minimum of 50" to ensure proper rotation of the cradle(s).
2. Using the three (3) holes on the inside face of the PILE MOUNT channel, align and mark the hole locations on the pile.

NOTE: PILE MOUNT should be positioned on either side of the pile, not on the dock or water side.

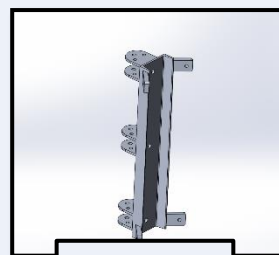
3. Using the 5/8" Auger Bit, drill completely through the piling at the 3 marked locations.

SWINGER LIFT LOCATION PREP (Mounting on Seawall)

1. Place the SEAWALL MOUNT in the desired location and measure the area around the mount to ensure there is adequate space for Swinger Lift to rotate and operate.

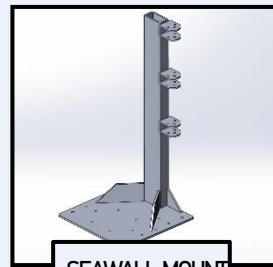
NOTE: SEAWALL MOUNT should be positioned away from any objects or structures that may interfere with operation or movement. Additionally, make sure the water depth meets recommended levels for the PWC.

REQUIRED PARTS (Piling)



PILE MOUNT
QTY: (1)

REQUIRED PARTS (Seawall)



SEAWALL MOUNT
QTY: (1)



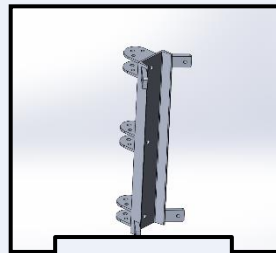
ATTACH MOUNT (Piling)

1. Using three (3) 5/8" Bolts (not included), secure the mount to the piling by inserting an appropriate bolt through each of the three (3) holes in the piling mount, and completely through the piling, as shown in figure 1.
2. Fasten appropriate hardware to the protruding ends of the mounting bolts and hand tighten to allow for adjustments.

NOTE: Ensure the PILE MOUNT is square and plumb to the piling; adjustments may be required to achieve desired alignment.

3. Fully tighten mounting hardware using appropriate tools.
4. Using the four (4) 5/8" x 4" Lag Bolts provided, secure the four tabs at the top and bottom of the PILE MOUNT to the piling.

REQUIRED PARTS (Piling)



PILE MOUNT
QTY: (1)

HARDWARE	QTY:
Pile Mount Hardware (not included)	3
5/8 X 4" Lag Bolts	4
5/8" Washer	4

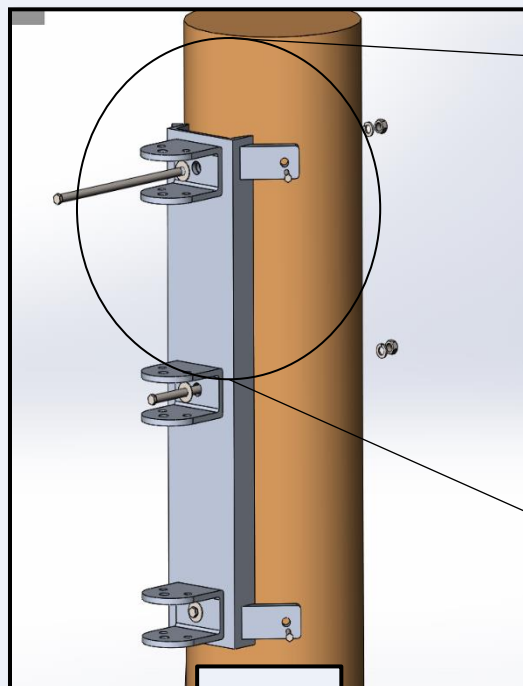


Figure 1

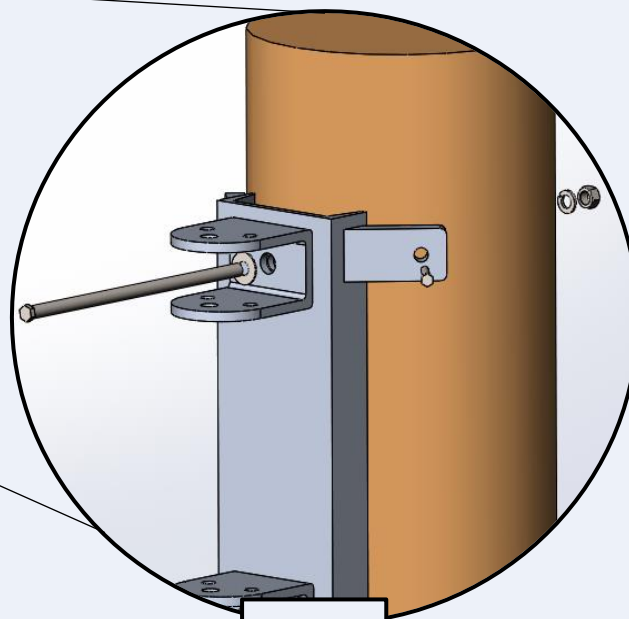


Figure 2



ATTACH MOUNT (Seawall)

NOTE: It is recommended to use more than one person for this step to ensure the lift stays upright at all times.

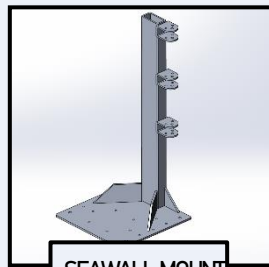
NOTE: it is recommended to have a trained professional pre-drill the SEAWALL MOUNT holes into the seawall to avoid causing damage to the seawall or lift.

1. Using four (4) 3/4" Bolts (not included), secure the mount to the seawall by inserting an appropriate bolt through each of the four (4) 3/4" holes in the SEAWALL MOUNT.
2. Using fourteen (14) 1/2" Bolts (not included), secure the mount to the seawall by inserting an appropriate bolt through each of the fourteen (14) 1/2" holes in the SEAWALL MOUNT.

NOTE: Ensure the SEAWALL MOUNT is square and plumb to the seawall; adjustments may be required to achieve desired alignment.

3. Fully tighten mounting hardware using appropriate tools.

REQUIRED PARTS (Seawall)



SEAWALL MOUNT
QTY: (1)

HARDWARE	QTY:
3/4" Seawall Mount Hardware (not included)	4
1/2" Seawall Mount Hardware (not included)	14

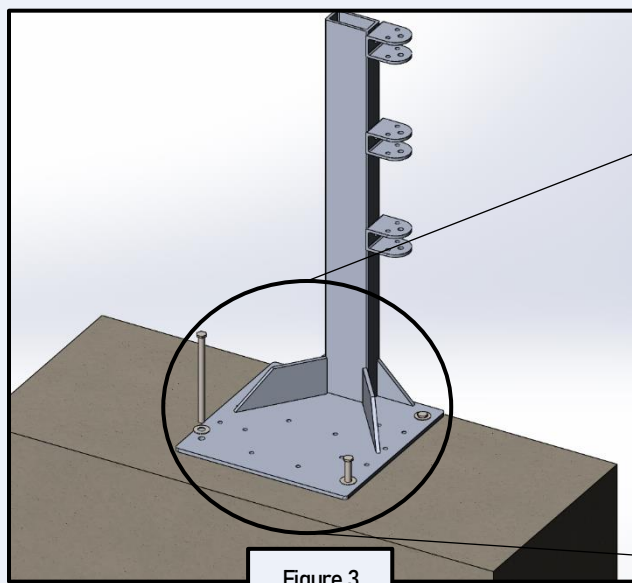


Figure 3

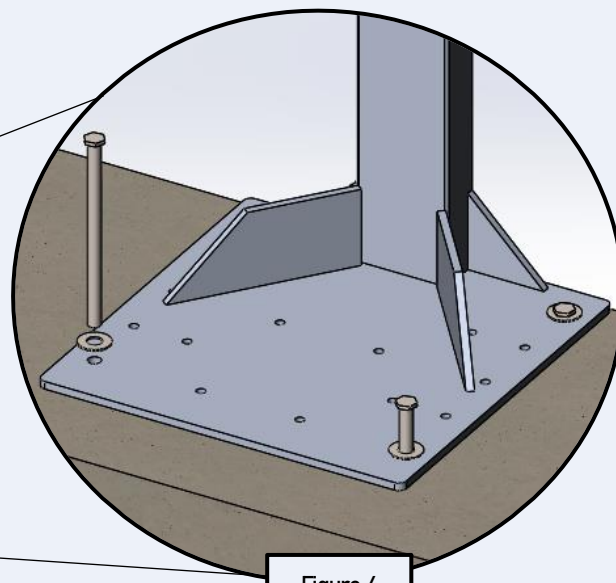


Figure 4



MOUNT MAST & MAST HOUSING

NOTE: From the remaining steps, the PILING MOUNT/SEAWALL MOUNT will be referred to as "MOUNT"

1. Insert the MAST into the MAST HOUSING with the four holes in the MAST oriented toward the bottom.

NOTE: The Cable Roller should be oriented toward the top of the MAST.

2. Stand the MAST and MAST HOUSING upright and position as close to the BASE MOUNT as possible.
3. Align the swivel hinges on the housing above the hinges on the BASE MOUNT and insert 3 Nylon Washers between the hinges on the BASE MOUNT and the housing as shown in figure 4.
4. Slip one (1) flat washer over each of the three (3) 5/8" X 4-1/2" bolts and insert through each of the three (3) hinges as shown in figure 4.
5. Slip a 5/8" Lock Washer, 5/8" Washer and 5/8" Hex Nut onto the protruding end of the bolt and securely fasten.
6. Insert the 1/2" X 6-1/2" MAST STOP PIN into the hole located at the top of the MAST and slip one (1) 1/2" washer on either side of the pin as shown in figure 3.
7. Insert one (1) Cotter Pin one each side of the MAST STOP PIN, making sure to spread the ends of the COTTER PIN outward, securing the pin and washers in place (THIS KEEPS THE LIFT FROM OVERTRAVELING WHEN IN USE).

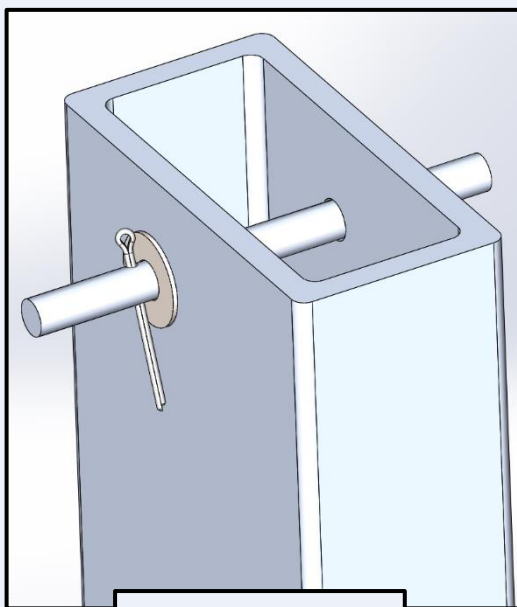
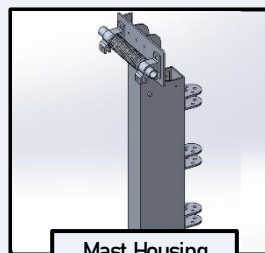
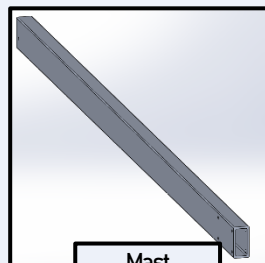


Figure 5

REQUIRED PARTS



Mast Housing
QTY: (1)



Mast
QTY: (1)

HARDWARE	QTY:
5/8" x 4-1/2" Hex Bolt	3
5/8" Lock Nut	3
5/8" Washer	6
1/2" Washer	2
3/4" Nylatron Washer	6
Mast Stop Pin	1
Cotter Pin	2

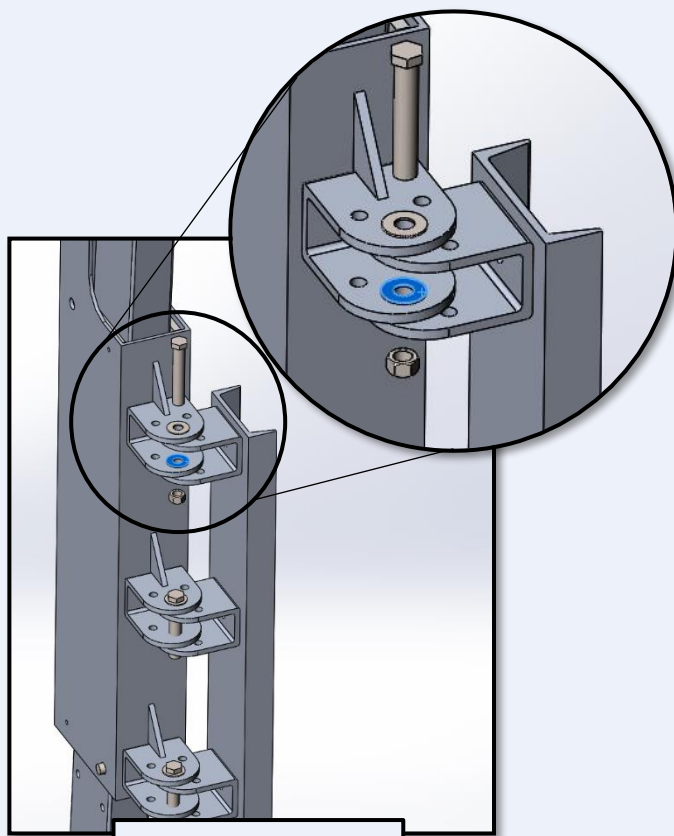


Figure 6

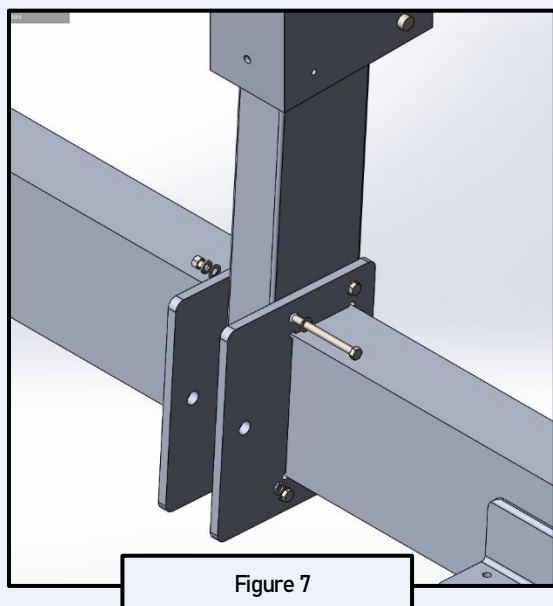


ATTACH CRADLE ARMS & CABLE

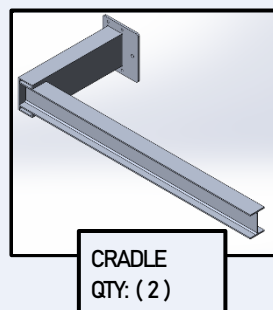
1. Align the four (4) holes in both CRADLE mounting plates with the four (4) holes on each side of the lower MAST.
2. Slip one (1) 1/2" Washer over one (1) 1/2" X 5" Hex Bolt, and insert it through the CRADLE mounting plates and MAST.
3. Slip one (1) 1/2" Washer, one (1) 1/2" Lock Washer, and one (1) 1/2" Hex Nuts onto the protruding end of the bolt and securely fasten; repeat for the remaining 3 bolts as shown in figure 7.
4. Slide the CABLE ROLLER between the mounting plates in front of the MAST and align the holes accordingly.

NOTE: Ensure the cable is hanging down on the outside of the CABLE ROLLER

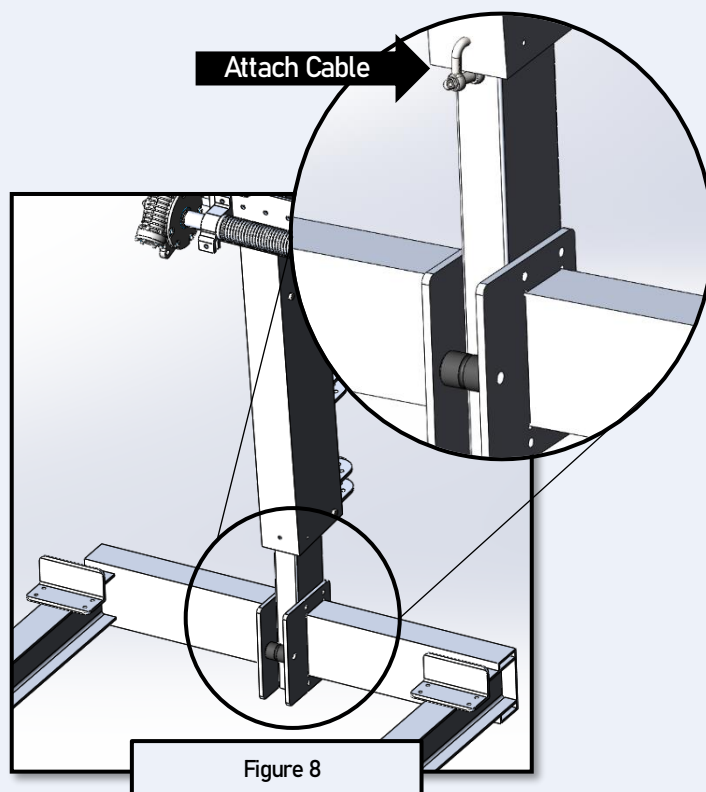
5. Slip one (1) 3/4" Washer over a 3/4" X 5" Hex Bolt and insert it through the plate and roller.
6. Slip one (1) 3/4" Washer, one (1) 3/4" Lock Washer, and one (1) 3/4" Hex Nuts onto the protruding end of the bolt and securely fasten.
7. Wrap the cable around the CABLE ROLLER and bring back upward between the CABLE ROLLER and the MAST. Attach the end of the cable to the D-SHACKLE at the lower end of the MAST HOUSING as shown in figure 8.



REQUIRED PARTS



HARDWARE	QTY:
1/2" x 5" Hex Bolt	4
3/4" x 5" Hex Bolt	1
1/2" Hex Nut	4
3/4" Hex Nut	1
1/2" Lock Washer	4
3/4" Lock Washer	1
1/2" Washer	8
3/4" Washer	2



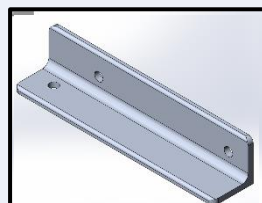


MOUNTING BUNK BRACKETS

1. Position the brackets so that the side with the single hole is oriented upwards. Align the brackets so that all the holes align with the holes on the other bracket(s) as shown in figure(s) 9 & 10.
2. Position the four (4) brackets around the CRADLE, making sure the side(s) with one (1) hole are oriented upward and running parallel to the cradle; the sides with two (2) holes should be running across the top and bottom the CRADLE as shown in figure 10. Repeat for the other three sets of brackets.
3. Slip one (1) Washer over one (1) 3/8" X 5-1/2" Hex Bolt and insert it into the top hole on the bracket side with two (2) holes. Repeat seven (7) times for other bracket sets.
4. Slip one (1) 3/8" Washer, one (1) 3/8" Lock Washer, and one (1) 3/8" Hex Nuts onto the protruding end of the bolt and hand tighten; repeat for the remaining seven (7) bolts.
5. Repeat steps 3 & 4 for the lower hole on the brackets.

NOTE: The bolts should be sitting on top and underneath the CRADLE(s).

REQUIRED PARTS



Bunk Bracket
QTY: 2

HARDWARE	QTY:
3/8" X 5-1/2" Hex Bolt	8
3/8" Hex Nut	8
3/8" Lock Washer	8
3/8" Washer	16

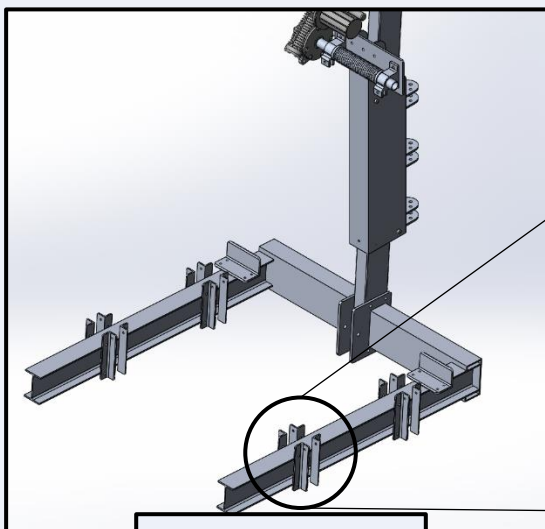


Figure 9

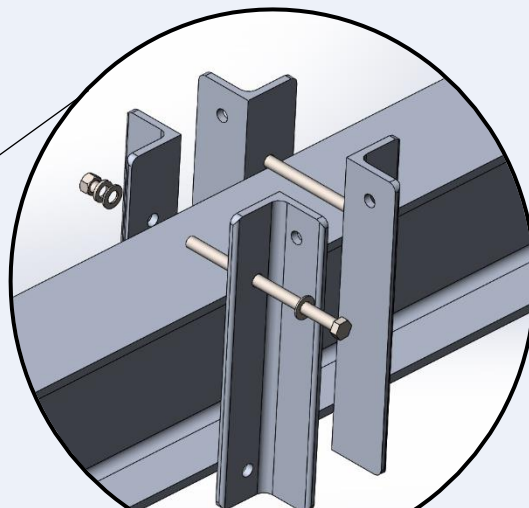


Figure 10

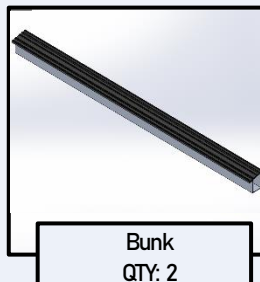


MOUNTING BUNKS

1. Sliding the connected brackets away from each other, position the BUNK between two (2) sets of brackets so that the single hole in the brackets are aligned with the single hole on the bunk for each set as shown in figure 11.
2. Slip one (1) Washer over one (1) 3/8" X 4" Hex Bolt and insert it into the hole on the bracket side facing the BUNK Repeat seven (7) times for other bracket sets.
3. Slip one (1) 3/8" Washer, one (1) 3/8" Lock Washer, and one (1) 3/8" Hex Nuts onto the protruding end of the bolt and securely fasten; repeat for the remaining seven (7) bolts.
4. Slide the BUNKS along the CRADLES to desired location and securely fasten all BUNK BRACKET and BUNK hardware.

NOTE: Verify with your PWC manufacture about proper BUNK positioning to avoid damage or personal injury.

REQUIRED PARTS



HARDWARE	QTY:
3/8" X 4" Hex Bolt	8
3/8" Hex Nut	8
3/8" Lock Washer	8
3/8" Washer	16

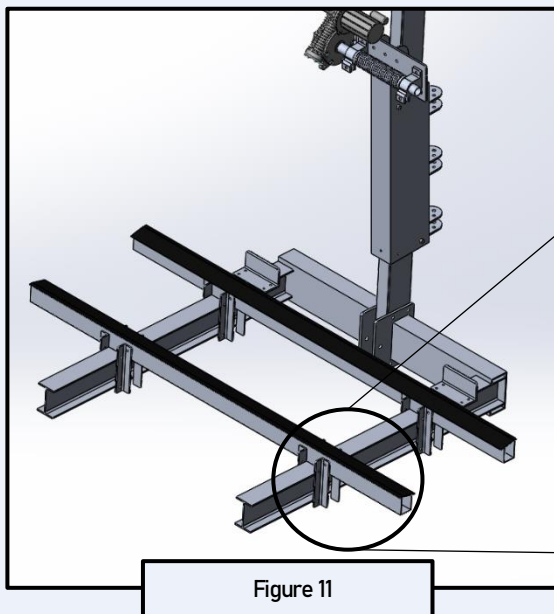


Figure 11

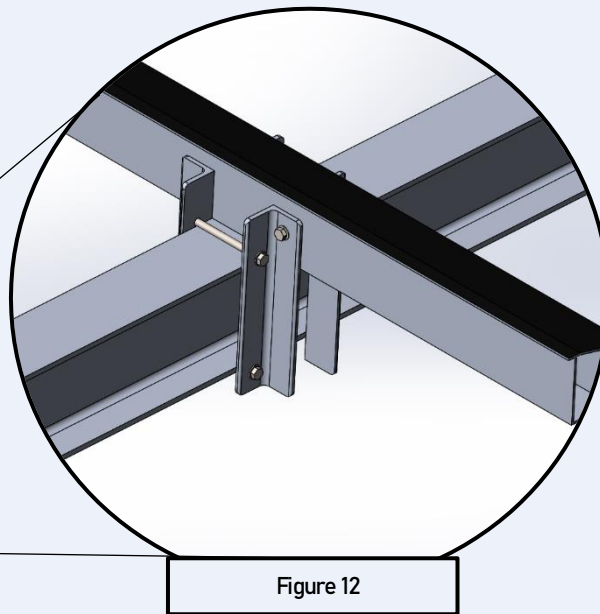


Figure 12



SEA-DRIVE INSTALLATION

1. Insert the drive shaft into the cable spool shaft, making sure the holes in both shafts are aligned properly to allow for hardware.
2. Rotate the SEA DRIVE so the motor mounting flange is in the upright position as shown in figure 13.
3. Slip one (1) 1/2" Washer over one (1) 1/2" X 2-1/2" Hex Bolt and insert it into the hole in the spool shaft, making sure the bolt goes through the drive shaft.
4. Slip one (1) 1/2" Washer, one (1) 1/2" Lock Washer, and one (1) 1/2" Hex Nuts onto the protruding end of the bolt and securely fasten.
5. Rotate the SEADRIE so the motor mounting flange is oriented upward; this should align the rear-drive mount tab with the torque angle tube as shown in figure 14.
6. Slip one (1) 1/2" Washer over one (1) 1/2" X 4-1/2" Hex Bolt and insert it into the hole in the spool shaft, making sure the bolt goes through the rear-drive mount tab and the torque angle tube.
7. Slip one (1) 1/2" Washer, one (1) 1/2" Lock Washer, and one (1) 1/2" Hex Nuts onto the protruding end of the bolt and securely fasten.

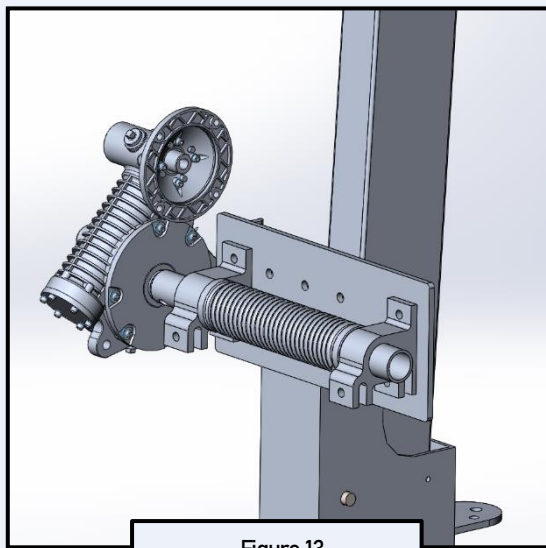
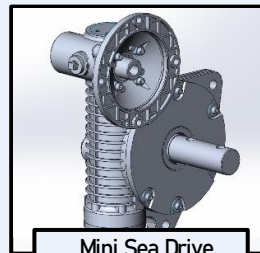


Figure 13

REQUIRED PARTS	
HARDWARE	QTY:
1/2" X 2-1/2" Bolt	1
1/2" X 4-1/2" Bolt	1
1/2" Hex Nut	2
1/2" Lock Washer	2
1/2" Washer	4



Mini Sea Drive
QTY: 1

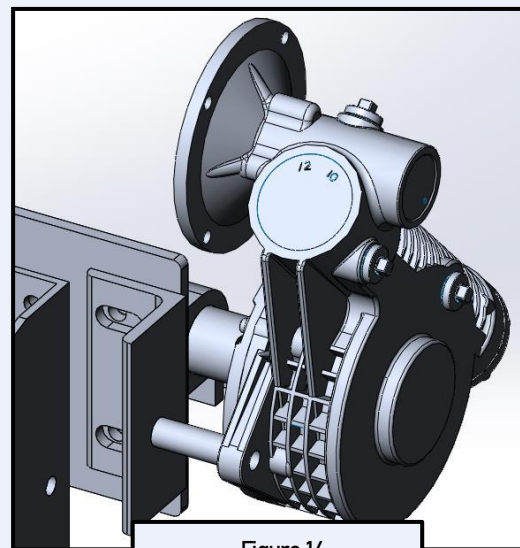


Figure 14



MOTOR INSTALLATION

1. Align keyway in motor shaft with key slot in the motor mount flange and insert completely until flush against motor.

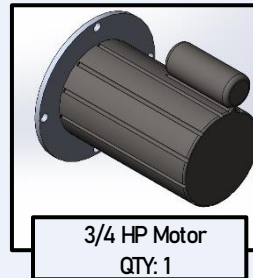
NOTE: Lubrication may be needed for a smooth and proper insertion; DO NOT use force to insert motor, as this may cause damage to system.

2. Rotate motor so that capacitor cover is oriented upward and the four holes in the motor housing align with the four holes in the flange as shown in figure 15.
3. Slip one (1) 3/8" Lock Washer over one (1) 3/8" X 1" Hex Bolt and insert it through the hole in the motor mount and into the threaded hole in the flange and securely fasten.

NOTE: Golden Boat Lifts recommends that a licensed electrician wire and install the electrical components on the Swinger Lift. Failure to follow this recommendation may lead to injury, death, or damage to the lift.

NOTE: Please contact the remote-control manufacturer for detailed instructions on setting up your remote and operating the motor.

REQUIRED PARTS



HARDWARE	QTY:
3/8" X 1" Hex Bolt	4
3/8" Lock Washer	4

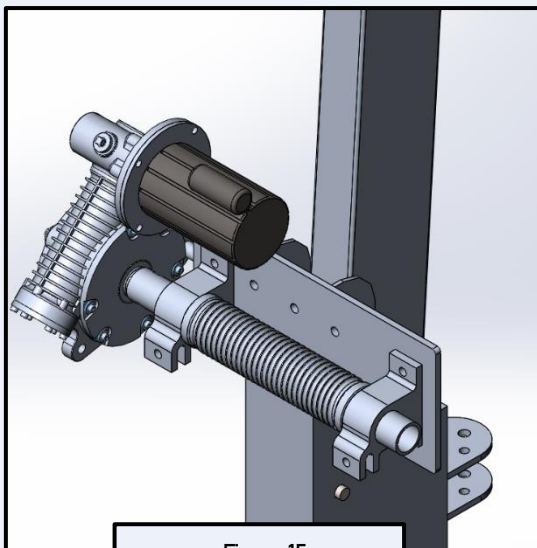


Figure 15



REFERENCE NOTES

JS-1500R SWINGER LIFT

PILING ☐ SEAWALL ☐

INSTALLATION PROVIDER: _____ INSTALLATION DATE: _____

INSTALLATION ADDRESS: _____

INSTALLATION CHECKLIST:

STEP	DATE/TIME	INITIAL	NOTES
SAFETY REQUIREMENTS			
PART IDENTIFICATION TABLE			
REQUIRED PARTS & HARDWARE			
SWINGER LIFT MOUNT LOCATION			
ATTACH MOUNT (PILING/SEAWALL)			
MOUNT MAST & MAST HOUSING			
ATTACH CRADLE ARMS & CABLE			
MOUNT BUNK BRACKETS			
MOUNT BUNKS			
FINAL HARDWARE/ OPERATION CHECK			
ADDITIONAL COMMENTS:			

I, _____, hereby verify that all guidelines and procedures were read and followed to the best of my ability.

SIGNATURE : _____

DATE OF COMPLETION: _____