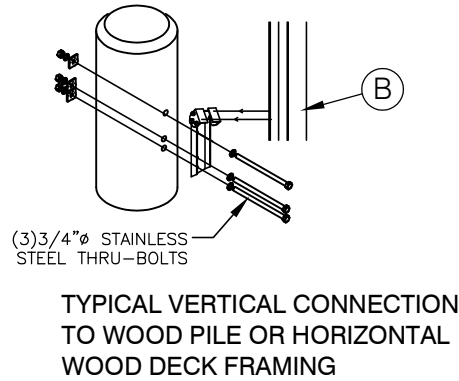
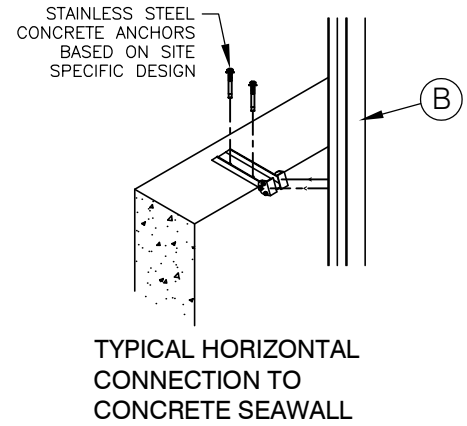
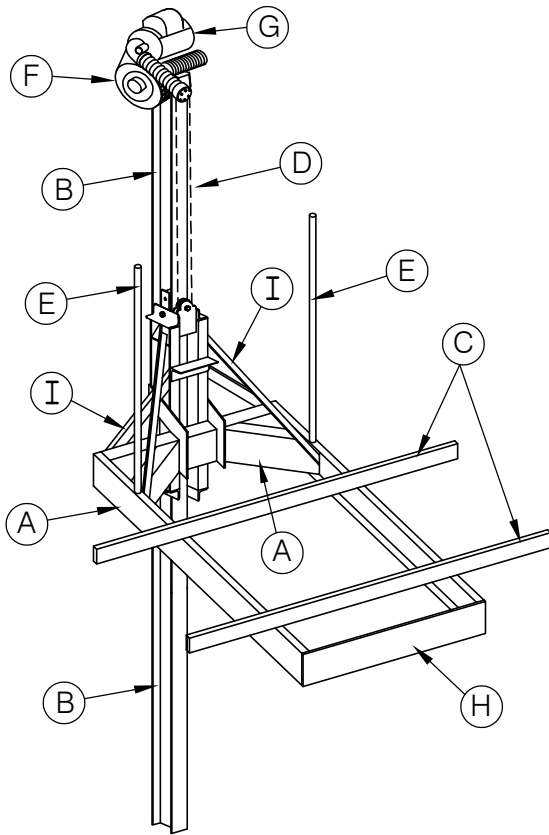


GOLDEN ENGINEERED 3K SINGLE TRACK ELEVATOR LIFT



NOTE: THIS STRUCTURE HAS BEEN DESIGNED FOR LOADS ASSOCIATED WITH AN ULTIMATE WIND SPEED OF 180 MPH, EXPOSURE "D", RISK CATEGORY I, CALCULATED PER FLORIDA BUILDING CODE 2020, ASCE/SEI 7-16 AND ADM-2015. BOATS SHALL NOT BE STORED ON LIFTS DURING HIGH WIND EVENTS. SITE SPECIFIC INFORMATION IS REQUIRED TO DETERMINE IF ADDITIONAL BRACING IS REQUIRED. ALL MEMBERS 6061-T6 ALUMINUM.

SUMMARY OF DESIGN FEATURES

	(A)	(B)	(C)	(D)	(E)	(F)	(G)	(H)	(I)	
LIFT CAPACITY	CRADLE BEAM	TRACK BEAM	BUNK BOARDS FEET	CABLE SIZE	GUIDE POST HEIGHT	DRIVE UNIT	MOTOR HP/VOLTAGE	END PLATE	DIAGONAL BRACES	INCHES OF LIFT PER MIN.
3,000#	(2) C7x2.75 TW = .17 TF = .29 78"	8" W x 6"D DOUBLE WEB Tf = .35, .27 Tw = .17 20'	(2) 2x8x84 ROUGH SAWN CARPETED	5/16" Ø (7X19) x 20' S.S. 2 PART	48"	VENDOR-SUPPLIED DRIVE UNIT	3/4 HP 120V/20A	7H .25T 48"	L3"x3"x3/8"	13-1/2"