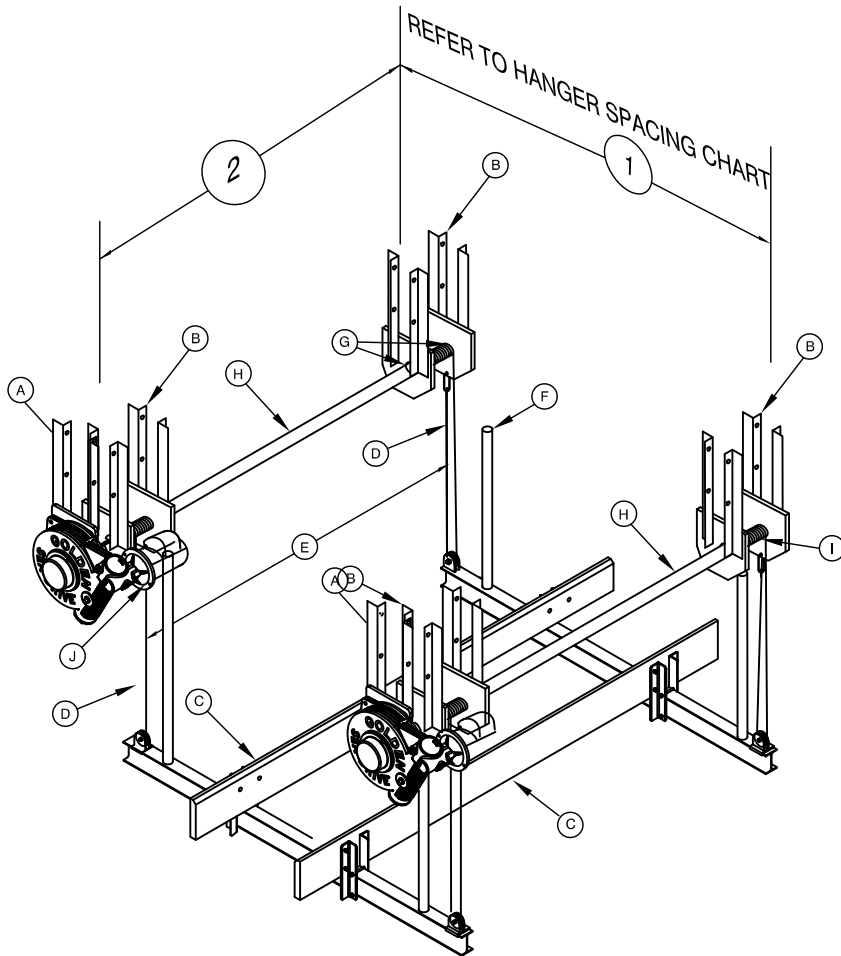
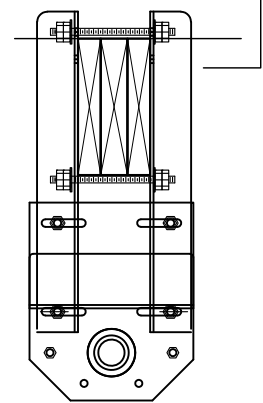


# GOLDEN ENGINEERED 2 MOTOR SEA DRIVE BOAT HOUSE LIFTS



STAINLESS STEEL HANGER MOUNT BRACKETS-RECOMMENDED ATTACHMENT BASED ON BRACKET CONFIGURATION. VERIFY ADEQUACY BASED ON ACTUAL SITE CONDITIONS:

4-1/2" STAINLESS STEEL THRU BOLTS USED TO CONNECT THE BRACKETS TO THE SUPPORT BEAM AND 4-1/2" STAINLESS STEEL THRU BOLTS USED TO CONNECT THE BRACKETS TO THE DRIVE PLATES. SUPPORT BEAM DESIGN BY OTHERS.



**HANGER SPACING CHART**  
The Boat Center of Gravity is to be Centered between Cradle Beams

Lift Capacity	*1" Dimension	*2" Dimension	Recommended Bolt Diameters
Lb.	In.	In.	In.
7,500	144	116.75	1/2
10,000	150		
14,000	150		
16,000	168		

NOTE: THIS STRUCTURE HAS BEEN DESIGNED FOR LOADS ASSOCIATED WITH AN ULTIMATE WIND SPEED OF 180 MPH, EXPOSURE 'D', RISK CATEGORY I, CALCULATED PER FLORIDA BUILDING CODE 7th EDITION, 2020, ASCE/SEI 7-16 AND ADM-2015. BOATS SHALL NOT BE STORED ON LIFTS DURING HIGH WIND EVENTS.

IN GENERAL, THE HANGERS SHALL BE ATTACHED TO A SITE SPECIFIC SUPPORT BEAM STRUCTURE (DESIGN BY OTHERS). THE CONTRACTOR SHALL VERIFY ALL BEAM CAPACITIES. ALL BEAMS TO BE #2 SYP PRESSURE TREATED WOOD AS A MINIMUM. ALL STRUCTURAL MEMBERS TO BE 6061-T6 ALUMINUM.

## SUMMARY OF DESIGN FEATURES

	(A)	(B)	(C)	(D)	(E)	(F)	(G)	(H)	(I)	(J)		
LIFT CAPACITY	TOP BEAM HANGER ASSY.	CRADLE I-BEAM	BUNK	CABLE SIZE	CABLE	GUIDE	BRGS	DRIVE	WINDER	MOTOR	INCHES	RECOM
Lbs	4 EACH	2 EACH	BOARDS (PT)	INCHES	SPREAD	POST		SHAFT	DIA	HP	OF LIFT	HANGER
	INCHES	INCHES	INCHES	INCHES	IN	HEIGHT				VOLTAGE	PER MIN	BOLT SIZE
7,500#	SUPPORT ARMS 23.5 H x 3 X 3 X 1/4"  DRIVE PLATES 14.5 H x 12 X 3/4"	6 H x .19 4 W x .29 144" LGTH	2 x 8 X 144 ROUGH SAWN CARPETED	(4) - 5/16" x 40' 40' STAINLESS STEEL 2 PART	116.75	80"	8-UT-210-31-B0	SCH 40 GALV PIPE	1 9" O.D. 8 GUAGE PIPE WITH CABLE GROOVES	(2) - 1 HP 120V/28A 240V/14A	19.85"	(4) 1/2" DIA PER LIFT LOCATION
10,000#		8 H x .23 5 W x .35 150" LGTH								(2) - 3/4 HP 120V/28A 240V/14A		
14,000#		8 H x .25 5 W x .41 150" LGTH								(2) - 1 HP 120V/28A 240V/14A		
16,000#		10 H x .25 6 W x .41 168" LGTH										