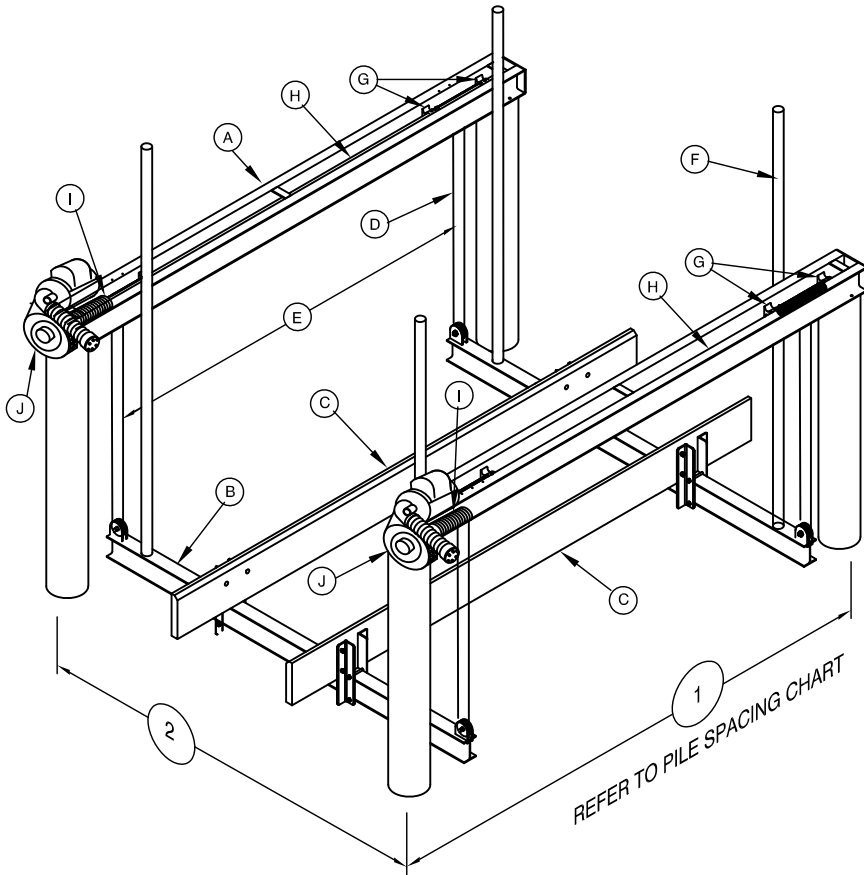


GOLDEN ENGINEERED 4 POST, 2 MOTOR SEA DRIVE BOAT LIFTS



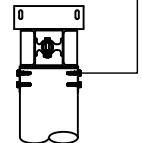
PILE SPACING CHART
The boat center of gravity needs to be set in the center of the top beam

Lift Capacity	1" Dimension		Recommended Pile Diameters
	Lb.	Ft.	
5,000	11	10	8
7,500		12	
10,000			
12,000	12	12.5	10
14,000			
16,000			
20,000			
24,000	14	14	10
28,000			
	16	16	12

STAINLESS STEEL PILING MOUNT BRACKET - RECOMMENDED ATTACHMENT BASED ON BRACKET CONFIGURATION. VERIFY ADEQUACY BASED ON ACTUAL SITE CONDITIONS:
4-3/8" STAINLESS STEEL LAG SCREWS USED TO CONNECT THE BRACKETS TO THE PILING AND 2-3/8" STAINLESS STEEL CARRIAGE BOLTS USED TO CONNECT THE BRACKETS TO THE LIFT CHANNELS

NOTE: THIS STRUCTURE HAS BEEN DESIGNED FOR LOADS ASSOCIATED WITH AN ULTIMATE WIND SPEED OF 180 MPH, EXPOSURE "D", RISK CATEGORY I, CALCULATED PER FLORIDA BUILDING CODE 7th EDITION, 2020, ASCE/SEI 7-16 AND ADM-2015. BOATS SHALL NOT BE STORED ON LIFTS DURING HIGH WIND EVENTS.

IN GENERAL, PILING PENETRATION TO BE A MINIMUM OF 10' INTO THE SAND BOTTOM OR 5' INTO THE ROCK STRATA. SUB-SURFACE CONDITIONS CAN VARY GREATLY, THE CONTRACTOR SHALL VERIFY ALL PILE CAPACITIES. ALL PILINGS TO BE 2.5 C.C.A. PRESSURE TREATED WOOD. ALL STRUCTURAL MEMBERS TO BE 6061-T6 ALUMINUM.



SUMMARY OF DESIGN FEATURES

LIFT CAPACITY	(A)	(B)	(C)	(D)	(E)	(F)	(G)	(H)	(I)	(J)	INCHES OF LIFT PER MIN	RECOM PILING SIZES				
	Lbs	TOP BEAM CHANNEL 2 EACH INCHES	CRADLE I-BEAM 2 EACH INCHES	BUNK BOARDS (PT)	CABLE SIZE INCHES	CABLE SPREAD IN	GUIDE POST HGTH	BRGS	DRIVE SHAFT	WINDER DIA			MOTOR HP VOLTAGE			
5,000#	4 H x .15 2 W x .23 141" OAL	6 H x .19 4 W x .29 120" LGTH	2x8x144 ROUGH SAWN CARPETED	4 - 5/16" x15" ST ST 1 PART	107.75	80"	10 - 2" H.D. EXTRUDED 6061-T6 ALUM.	1-15/16" DIA. SCH 40 GALV PIPE	3-1/2" DIA SCH 80 ALUM PIPE W/ CABLE GROOVES	2 - 3/4 HP 120V/20A 240V/10A	39.70"	8" DIA				
7,500#	5 H x .15 2.25 W x .26 x 153" OAL	6 H x .19 4 W x .29 144" LGTH		4 - 5/16" x15" ST ST 1 PART	120.75					2 - 1 HP 120V/28A 240V/14A						
10,000#	6 H x .17 2.5 W x .29 x 153" OAL	8 H x .23 5 W x .35 150" LGTH		3x10x192 ROUGH SAWN CARPETED	4 - 5/16" x30" ST ST 2 PART					116.75	120"	1-15/16" DIA. SCH 80 GALV PIPE	3-1/2" DIA SCH 80 ALUM PIPE W/ CABLE GROOVES	2 - 3/4 HP 120V/20A 240V/10A	19.85"	10" DIA
12,000#	7 H x .17 2.75 W x .29 x 153" OAL	8 H x .25 5 W x .41 150" LGTH												2 - 1 HP 120V/28A 240V/14A		
14,000#	7 H x .17 2.75 W x .29 x 153" OAL	10 H x .25 6 W x .41 168" LGTH	4 - 5/16" x45" ST ST 3 PART			127.75	151.75	1-15/16" DIA. SCH 80 GALV PIPE	3-1/2" DIA SCH 80 ALUM PIPE W/ CABLE GROOVES					2 - 1 HP 120V/28A 240V/14A	13.20"	10" DIA
16,000#	8 H x .19 3 W x .35 x 153" OAL	10 H x .25 6 W x .41 192" LGTH												4 - 5/16" x45" ST ST 3 PART		
20,000#	8 H x .25 3.75 W x .41 x 177" OAL	10 H x .25 6 W x .41 192" LGTH	3x10x192 ROUGH SAWN CARPETED	4 - 5/16" x60" ST ST 4 PART	150.3125	120"	1-15/16" DIA. SCH 80 GALV PIPE	3-1/2" DIA SCH 80 ALUM PIPE W/ CABLE GROOVES	2 - 1 HP 120V/28A 240V/14A	8.57"	12" DIA					
24,000#	8 H x .25 3.75 W x .41 x 201" OAL	10 H x .29 6 W x .50 192" LGTH							4 - 5/16" x60" ST ST 4 PART			150.3125	2 - 1-1/2 HP 120V/30A 240V/15A			
28,000#	10 H x .526 2.88 W x .437 x 206" OAL	12 H x .31 7 W x .62 192" LGTH							4 - 5/16" x60" ST ST 4 PART			150.3125	2 - 1-1/2 HP 120V/30A 240V/15A			