



# GOLDEN FLOTATION SYSTEMS





# Golden Flotation Systems®

Golden Marine Systems (GMS) exclusive patented flotation systems (patent# 6,205,945) combined with our aluminum whaler system (patent pending). This hybrid design creates incredible strength, adjustable cleats, finger piers and pile guides, as well as allowing for a long-life system. The flotation systems polyethylene pontoons with an integrated top tray have been designed to receive a poured concrete walking surface. The walking surface can be customized with the client's choice of color, stamped pattern, texture, or logo. The flotation pontoon is filled with expanded polystyrene which is steamed inside of the pontoon resulting in a solid block of foam. This process creates the foundation for a stable, durable walking surface that requires minimal maintenance. The trough system is primarily used for utilities and is easily accessed by removal of the aluminum deck cover. This design allows for quick installation and easy inspection.

The Golden Flotation System is adaptable to all marina applications and is only limited by the imagination. Our exclusive patented modular design gives customers the flexibility to create any dock configuration, and the footprint can be reconfigured as future needs and desires change. Our flotation system offers versatility, longevity and low maintenance requirements.

GMS recognizes the unique needs of each customer's project and has adopted a sales initiative to meet those needs. Whether your project requires design, supply or complete assembly and installation of a floating dock system, GMS can make it happen.



# GOLDEN MARINE SYSTEMS MARINA SOLUTIONS



(Patent# 6,205,945)  
Patent Pending



**GOLDEN**  
Marine Systems LLC



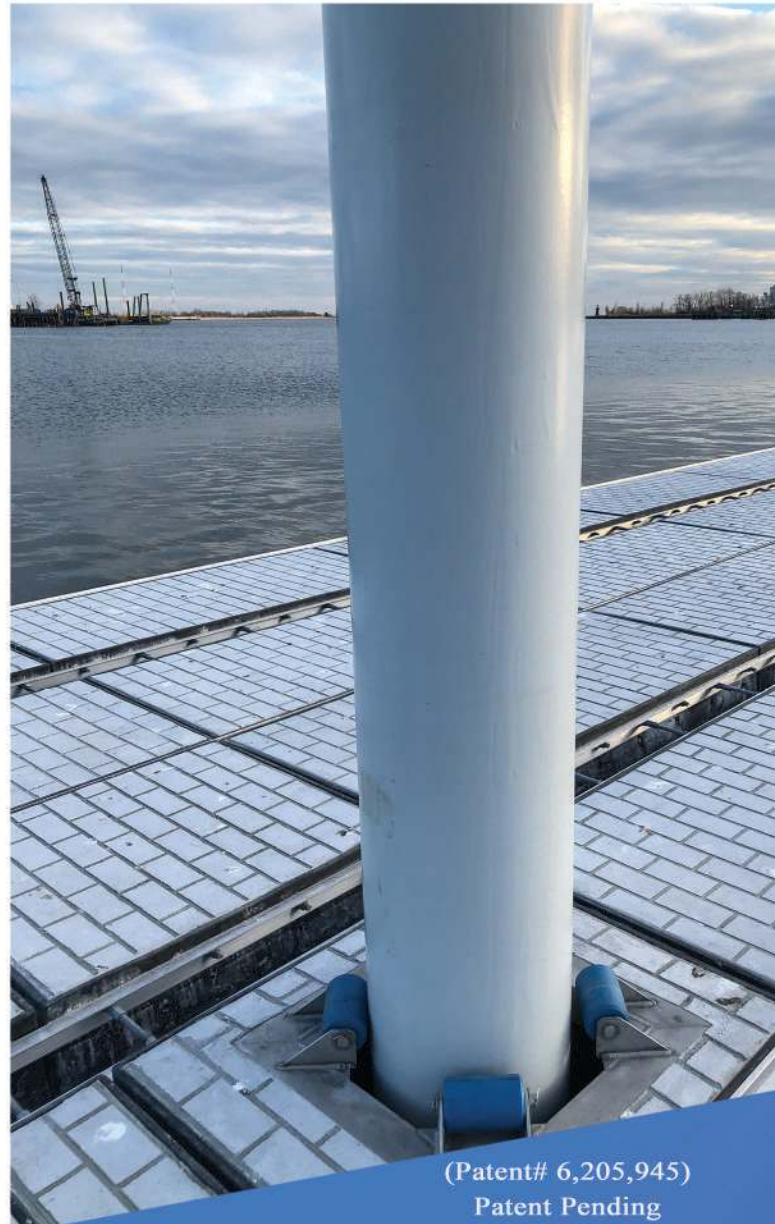
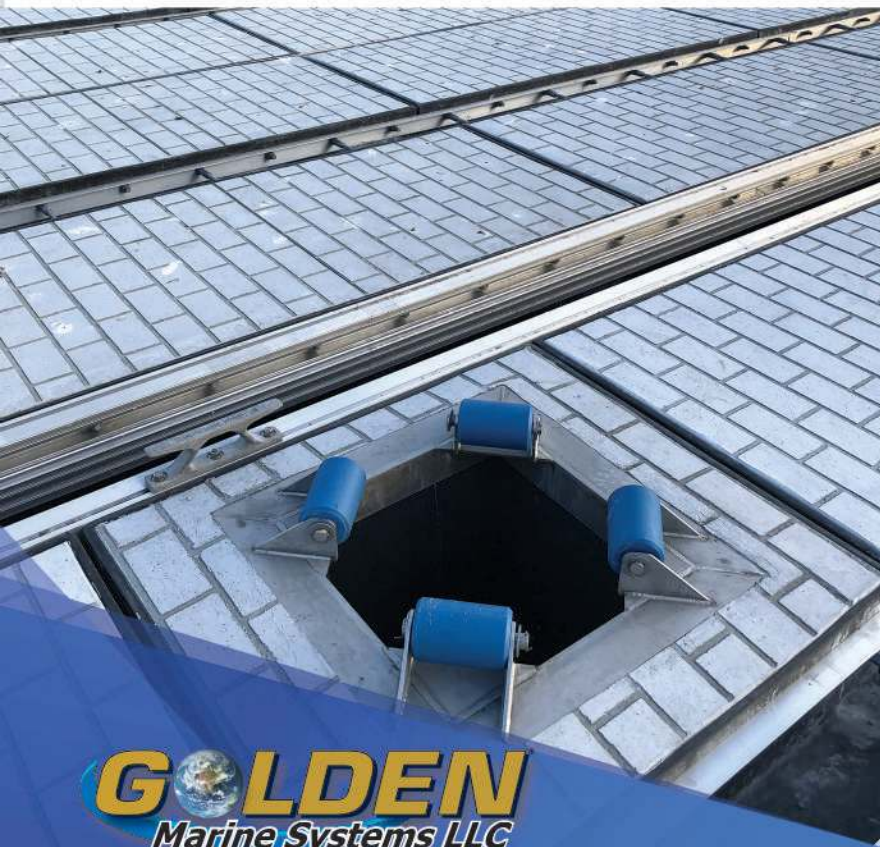
GOLDEN MARINE SYSTEMS

# PILE GUIDE SYSTEM



Stainless Steel pile ring is embedded into the concrete surface. Ultra high molecular weight plastic rollers on stainless steel pins are used to ensure smooth maintenance free operation.

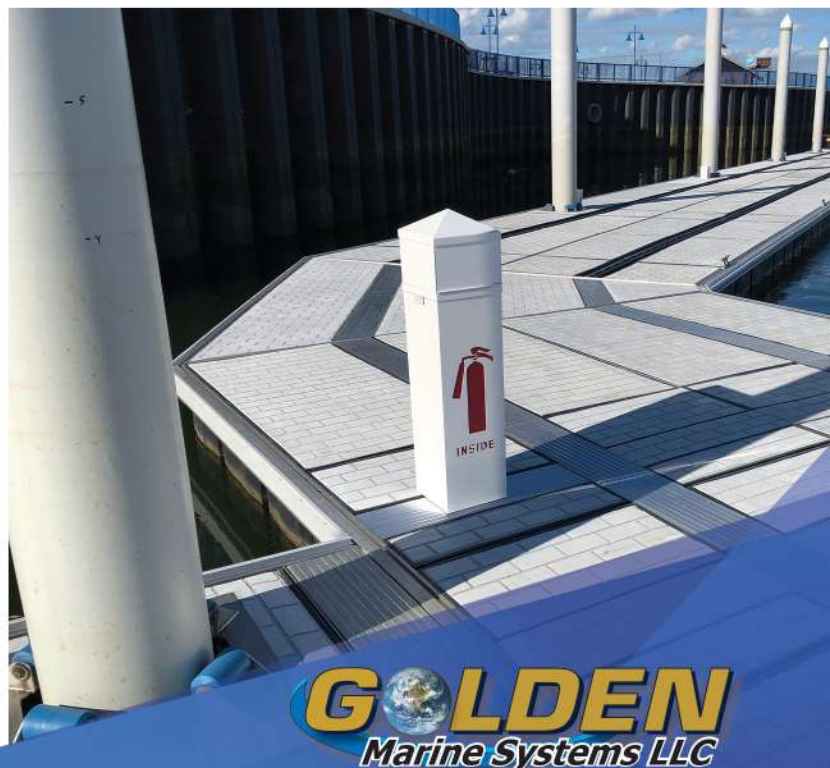
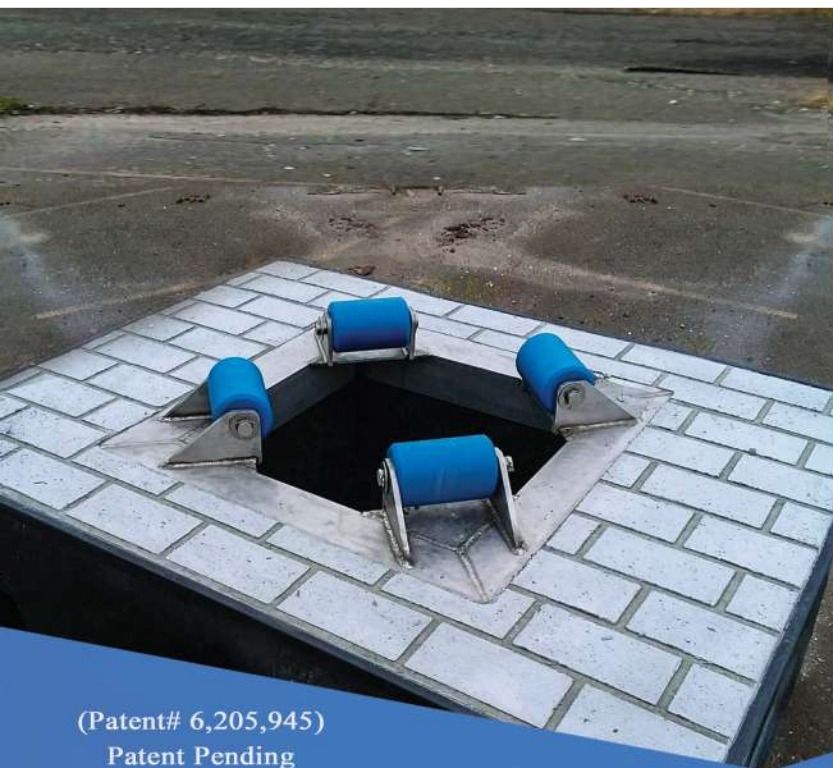
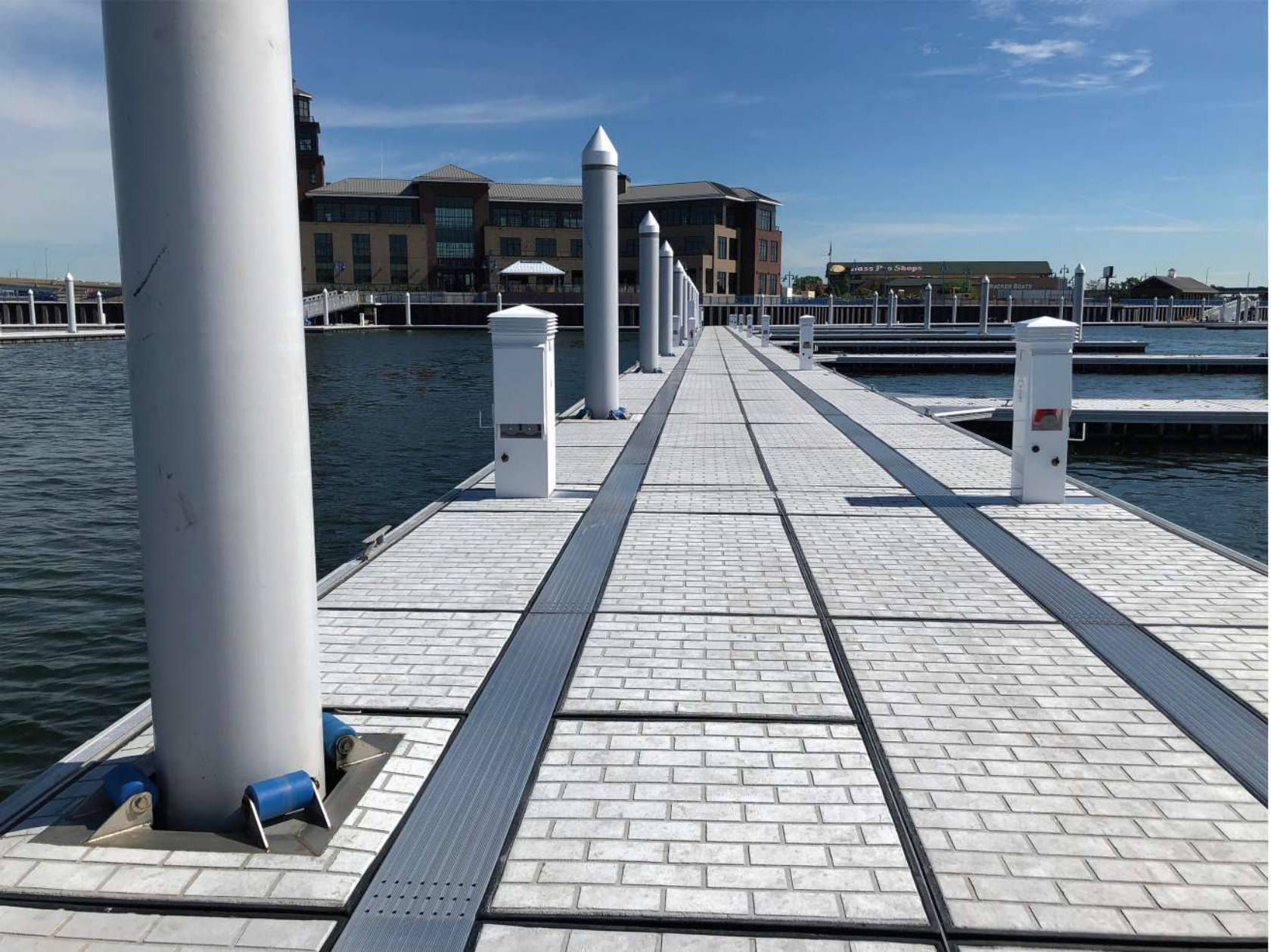
All structural steel, channel tubes, frames, and angles are fabricated from 300 series stainless steel



**GOLDEN**  
Marine Systems LLC

(Patent# 6,205,945)  
Patent Pending





(Patent# 6,205,945)  
Patent Pending

**GOLDEN**  
Marine Systems LLC



**GOLDEN MARINE SYSTEMS**

# CONCRETE SURFACE

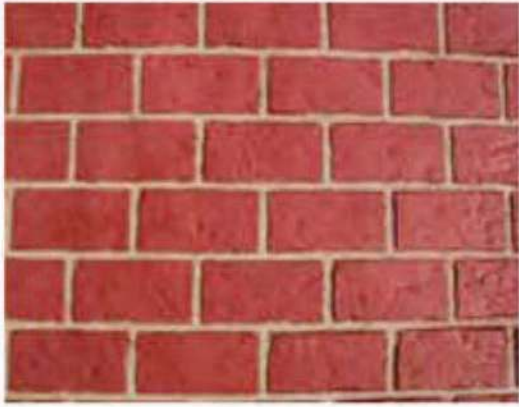
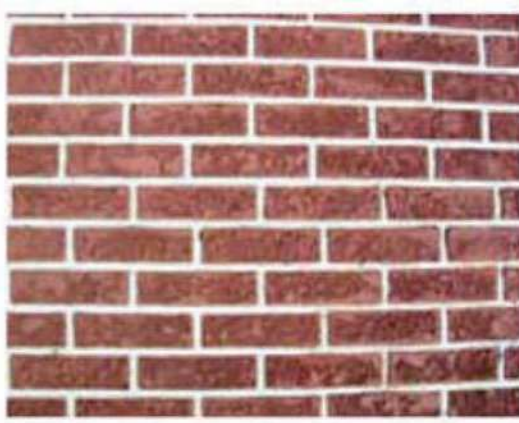
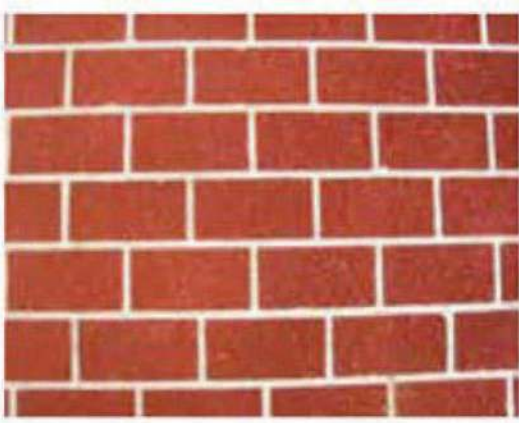


The reinforced concrete surface has a minimum 28 day compression strength of 5,000 PSI, per ASTM standard C-94. The walking deck is poured in one monolithic pour over a galvanized welded wire reinforcement that meets ASTM standard A-185.

The standard surface is trowel finished with a broom non-skid texture applied transversely to the walking surface. The float module allows for individual concrete pour or the insertion of pre-stressed, pre-cast concrete slab. Design options include choice of colors and stamped patterns.







(Patent# 6,205,945)  
Patent Pending





GOLDEN MARINE SYSTEMS

# FLOTATION PONTOON



Our float is a rotationally molded polyethylene plastic tub with patented tray top area designed to receive reinforced concrete walking surface. A polyethylene plastic shell encasing a closed cell EPS(expanded polyethylene) core. The polyethylene is specially treated to resist UV deterioration. The EPS foam core has weight of .05- 1.10 lbs. per cubic ft. conforming to ASTM standard specification C-578. The EPS foam has a water absorption rate maximum of only three percent by volume as tested by ASTM method C-272.





(Patent# 6,205,945)  
Patent Pending

**GOLDEN**  
Marine Systems LLC



**GOLDEN MARINE SYSTEMS**

# UTILITY RACEWAY

Our patented float design incorporates a utility raceway with easy deck top access. Aluminum tubing and clips under the whalers can also be used as an integral part of the system in order to establish utility channels for fuel, fresh water, pump out, stand pipe electrical, telephone and cable TV.







(Patent# 6,205,945)  
Patent Pending







WHEN IT'S DONE RIGHT....IT'S GOLDEN



**Golden Flotation Systems**

**17611 East Street**

**North Fort Myers, FL 33917**

**Ph: 239-337-4141**

**[www.goldenmarinesystems.com](http://www.goldenmarinesystems.com)**