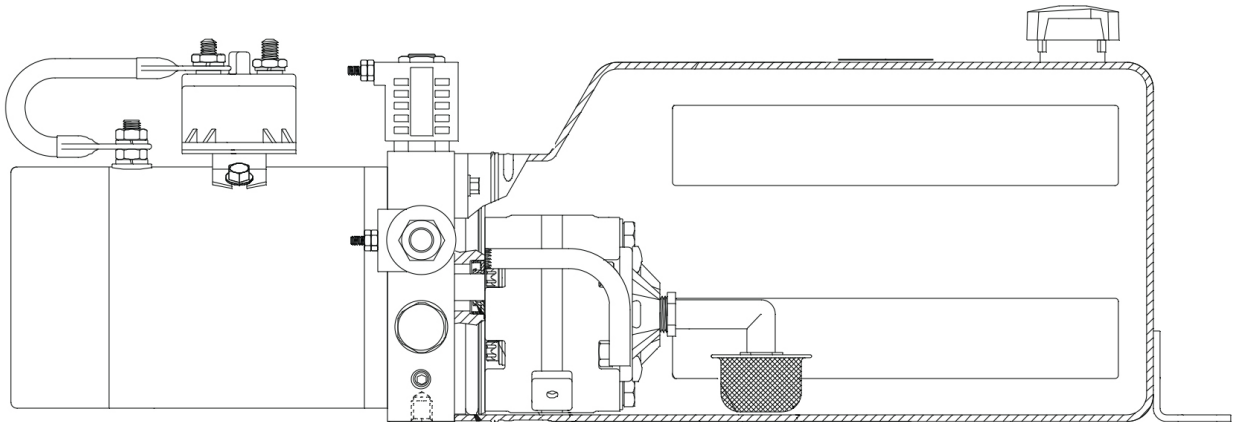




12V DC Double-Acting Hydraulic Power Unit - #DB-100111



Specifications for SPX Stone Hydraulic Power Unit: DB-100111

- 12V Standard Duty Electric Motor with Single Terminal (Black Powder Coat)
- AFC Series Gear Pump - (1.2 CC Rev / 0.073 CIPR - 5000 Max RPM)
- Dual Adjustable Relief Valves Factory Preset to 3300 PSI
- A & B Pressure/Return Ports - 9/16" SAE Thread (#6 ORB Fitting)
- 2 Gallon Plastic Reservoir for Horizontal Mount with Breather-Fill Port
- Anti-Motorizing Check Valve
- 2 Position 4 Way Directional Valve with 10V DC Single Post Coil
- Normally Closed Release Valve with 10V DC Single Post Coil
- 2.0 GPM Pressure Compensated Flow Control
- Marine Grade Bio-Degradable Fluid Compatible

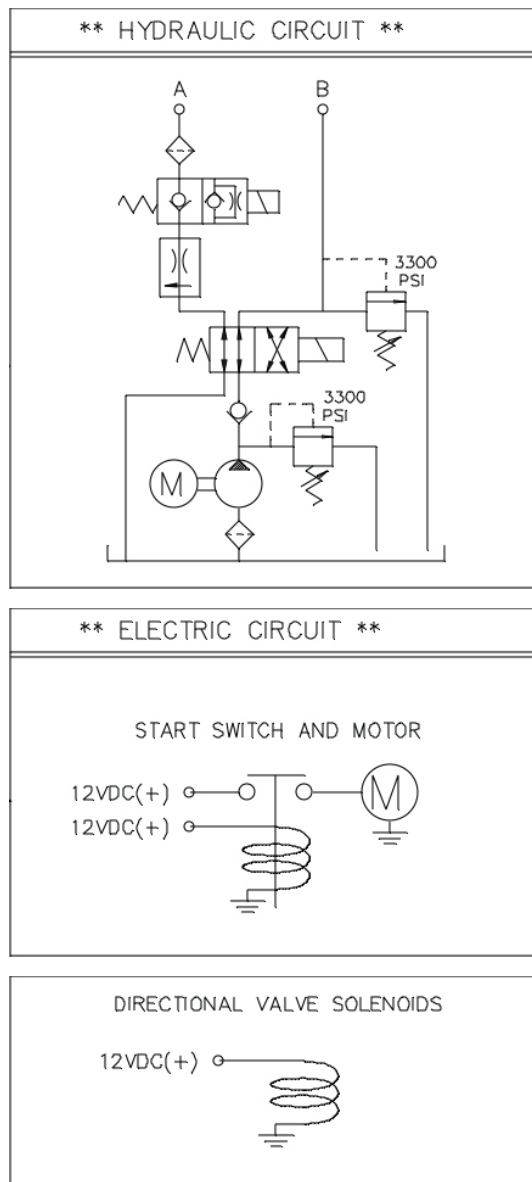


SPX Stone Hydraulic Power Units
Supplied by **National Hydraulic Supply**

Contact: Jason Currie
Phone: 847.962.1685
jason@nationalhydraulicsupply.com

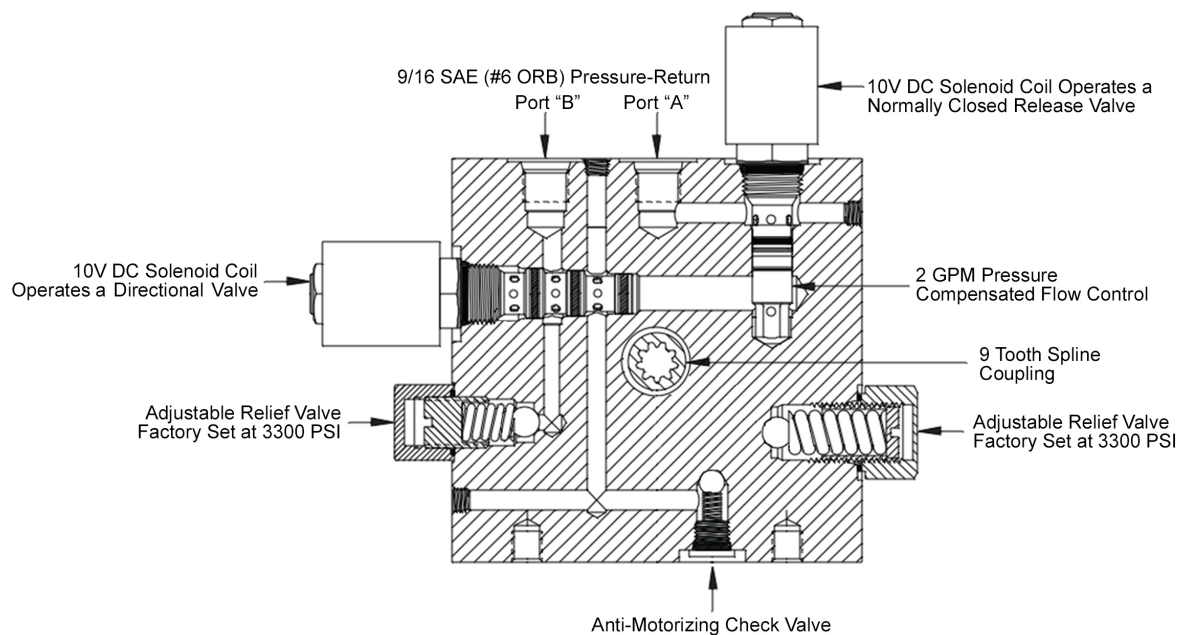


12V DC Double-Acting Hydraulic Power Unit - #DB-100111





12V DC Double-Acting Hydraulic Power Unit - #DB-100111



SPX Stone Hydraulic Power Units
Supplied by **National Hydraulic Supply**

Contact: Jason Currie
Phone: 847.962.1685
jason@nationalhydraulicsupply.com