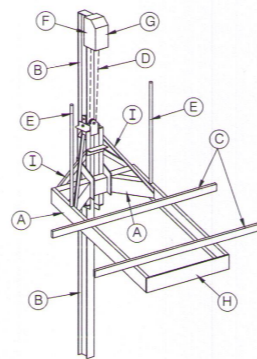


# GOLDEN ENGINEERED 3K SINGLE TRACK ELEVATOR LIFT



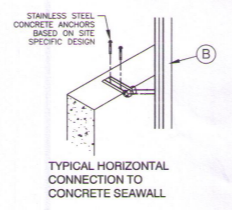
**STRUCTURAL ENGINEERING REVIEW**

THIS CONSTRUCTION HAS BEEN DESIGNED AS A WIND-WIND FORCE RESISTING SYSTEM WITH CALCULATED SWIFT AND WIND LOADS IN COMPLIANCE WITH THE FLORIDA BUILDING CODE. ALL DESIGN AND CONSTRUCTION REQUIREMENTS AND ACCESS TO STAIRS AND DESIGN LOADS FOR BALCONY AND OTHER STRUCTURE TO BE INSTALLED THE WIND LOADS ASSOCIATED WITH AN ULTIMATE WIND SPEED OF 180 MPH EXPOSURE 1D, RISK CATEGORY I, CALCULATED PER FLORIDA BUILDING CODE 2017.

MANUFACTURING PERFORMANCE ON INSTALLATION OF THIS PRODUCT THESE CALCULATIONS WERE BASED ON THE MANUFACTURING PERFORMANCE OF THE PRODUCT. THESE CALCULATIONS WERE BASED ON THE MANUFACTURING PERFORMANCE OF THE PRODUCT. THESE CALCULATIONS WERE BASED ON THE MANUFACTURING PERFORMANCE OF THE PRODUCT.

J. L. GARDNER  
3811 GRATE ROAD NW  
FORT MYERS, FL 33917  
PHONE 888 671 1038

J. L. GARDNER, P.E.  
DATE: 3-27-18  
SIGNATURE NOT VALID WITHOUT RAISED SEAL.



NOTE: THIS STRUCTURE HAS BEEN DESIGNED FOR LOADS ASSOCIATED WITH AN ULTIMATE WIND SPEED OF 180 MPH, EXPOSURE 1D, RISK CATEGORY I, CALCULATED PER FLORIDA BUILDING CODE 2017, ASCE/SEI 7-10 AND ADM-2015. BOATS SHALL NOT BE STORED ON LIFTS DURING HIGH WIND EVENTS. SITE SPECIFIC INFORMATION IS REQUIRED TO DETERMINE IF ADDITIONAL BRACING IS REQUIRED. ALL MEMBERS 6061-T6 ALUMINUM.

## SUMMARY OF DESIGN FEATURES

	A	B	C	D	E	F	G	H	I
LIFT CAPACITY									
CRADLE BEAM									
TRACK BEAM									
SUNK BOARDS FEET									
CABLE SIZE									
GUIDE POST HEIGHT									
DRIVE UNIT									
MOTOR INVOLTAGE									
END PLATE									
DIAGONAL BRACES									
INCHES OF LIFT PER MIN.									